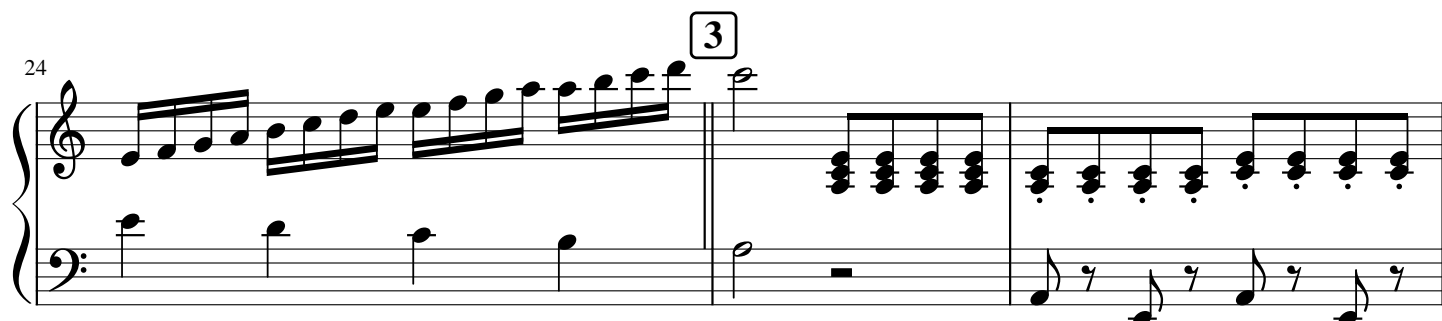


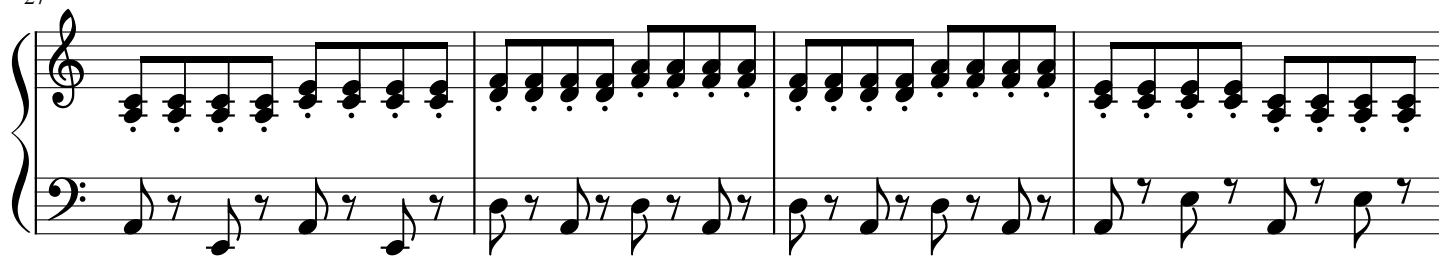
Господи услышь

А. Дрибноход

$\text{♩} = 80$



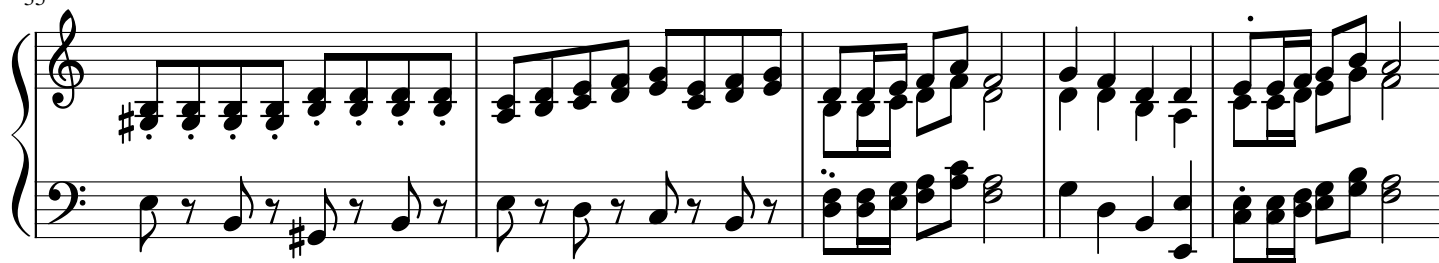
27



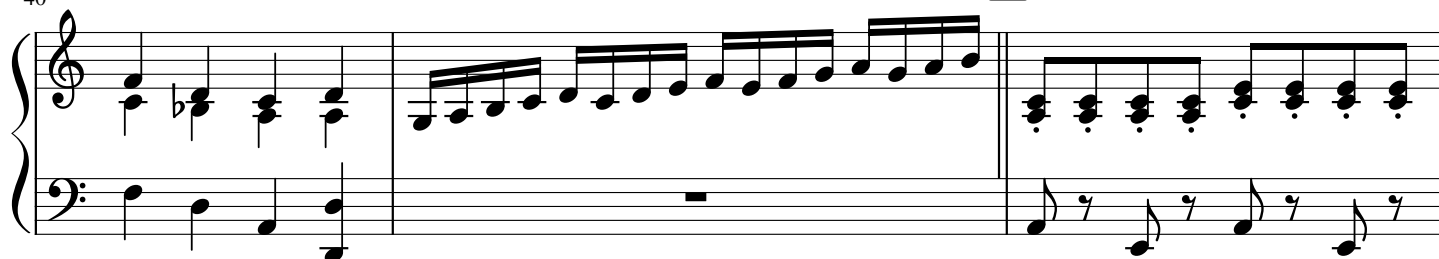
31



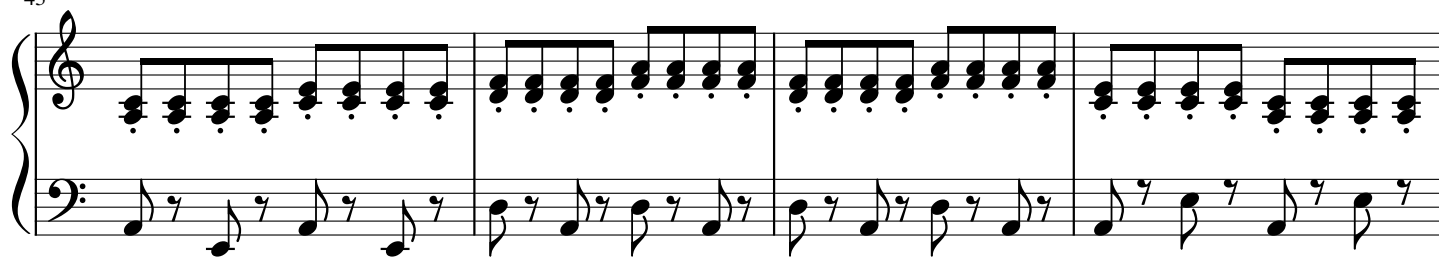
35



40



43



47



51

Measures 51-55 of a piano piece. The music is in treble and bass staves. Measure 51 features a complex chordal texture in the right hand with many sharps, while the left hand has a simple bass line. The texture evolves through the measures, with the right hand playing more active patterns and the left hand providing harmonic support.

56

5 ♩ = 85

Measures 56-60. Measure 56 starts with a new section marked with a box containing the number 5 and a tempo marking of ♩ = 85. The music continues with complex chordal textures in the right hand and a steady bass line in the left hand. A double bar line appears at the end of measure 59.

61

Measures 61-65. The music continues with complex chordal textures in the right hand and a steady bass line in the left hand. The right hand features many sharps and complex intervals, while the left hand provides a harmonic foundation.

6

♩ = 80

65

Measures 65-72. Measure 65 begins a section marked with a box containing the number 6 and a tempo marking of ♩ = 80. The music is characterized by a high degree of rhythmic complexity, with many rests and syncopation in both hands. The right hand often plays chords or single notes with rests, while the left hand has more continuous movement.

73

Measures 73-78. The music continues with complex chordal textures in the right hand and a steady bass line in the left hand. The right hand features many sharps and complex intervals, while the left hand provides a harmonic foundation.

79 7 ♩ = 90

8 8 ♩ = 85

87

94

97