

Бас

ПРОСЛАВЬТЕ БОГА

И. С. Проханов (1869–1935)

H. R. Palmer (1834-1907)
Arranžeerija Ernest Elnathan

Радостно ♩ = 120

The musical notation for Example 6-10 consists of a single staff with a bass clef and a common time signature (C). The melody begins with a forte (*f*) dynamic marking. The notes are as follows:
 Measure 1: Quarter note G₂, quarter note A₂.
 Measure 2: Quarter note B₁, quarter note C₂.
 Measure 3: Quarter note D₂, quarter note E₂.
 Measure 4: Quarter note F₂, quarter note G₂.
 Measure 5: Quarter note A₂, quarter note B₁.
 Measure 6: Quarter note C₂, quarter note D₂.
 Measure 7: Quarter note E₂, quarter note F₂.
 Measure 8: Quarter note G₂, quarter note A₂.
 Measure 9: Quarter note B₁, quarter note C₂.
 Measure 10: Quarter note D₂, quarter note E₂.
 Measure 11: Quarter note F₂, quarter note G₂.
 Measure 12: Quarter note A₂, quarter note B₁.
 Measure 13: Quarter note C₂, quarter note D₂.
 Measure 14: Quarter note E₂, quarter note F₂.
 Measure 15: Quarter note G₂, quarter note A₂.
 Measure 16: Quarter note B₁, quarter note C₂.
 Measure 17: Quarter note D₂, quarter note E₂.
 Measure 18: Quarter note F₂, quarter note G₂.
 Measure 19: Quarter note A₂, quarter note B₁.
 Measure 20: Quarter note C₂, quarter note D₂.

6

6

1

mf

11

The bass line of 'The Rose Tree' is written on a single staff in bass clef. It consists of 12 measures. The first measure has a half note G2. The second measure has a half note F2. The third measure has a quarter note E2, a quarter note D2, and a quarter note C2. The fourth measure has a quarter note B1, a quarter note A1, and a quarter note G1. The fifth measure has a quarter note F1, a quarter note E1, and a quarter note D1. The sixth measure has a quarter note C1, a quarter note B0, and a quarter note A0. The seventh measure has a quarter note G0, a quarter note F0, and a quarter note E0. The eighth measure has a quarter note D0, a quarter note C0, and a quarter note B0. The ninth measure has a quarter note A0, a quarter note G0, and a quarter note F0. The tenth measure has a quarter note E0, a quarter note D0, and a quarter note C0. The eleventh measure has a quarter note B0, a quarter note A0, and a quarter note G0. The twelfth measure has a quarter note F0, a quarter note E0, and a quarter note D0.

17 | 2

Musical notation for the bass line of 'The Rose Tree'. The notation is on a single staff in bass clef, 4/4 time. The notes are: G2 (half note), A2 (half note), B2 (quarter note), A2 (quarter note), G2 (half note), F2 (half note), E2 (quarter note), D2 (quarter note), C2 (half note), B1 (half note), A1 (quarter note), G1 (quarter note).

23

[illegible]

28

28 4 *mf*

mp

32

[illegible]

36

36

5

f

40

The bass line is written on a single staff with a bass clef. It consists of four measures. The first measure contains a half note G2, a quarter note A2, and a quarter note B2. The second measure contains a half note C3, a quarter note D3, and a quarter note E3. The third measure contains a half note F3, a quarter note G3, and a quarter note A3. The fourth measure contains a half note B3, a quarter note C4, and a quarter note D4. The piece ends with a double bar line.

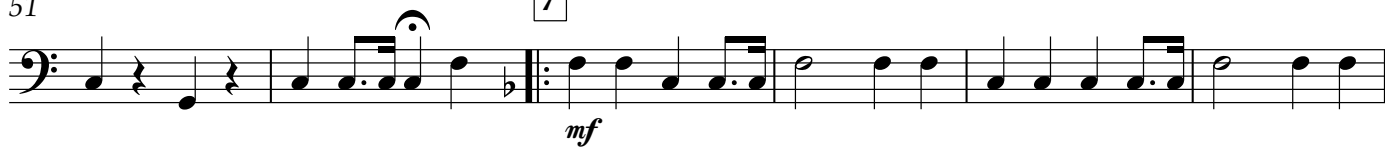
44

6



51

7



57

1.

2.



62 8



70 9



78 10



85

11

