

Тихая ночь

Баян

обр. Станислав Маген

Measures 1-4 of the piece. The key signature is one flat (B-flat), and the time signature is 3/4. The notation is for a bayan, showing both treble and bass staves. The bass staff contains sustained chords marked with 'Б' (B-flat) and 'Б+М' (B-flat + M), with asterisks indicating sustained notes. The treble staff contains moving eighth and quarter notes.

Measures 5-8. Measure 5 starts with a 'Б+М' chord. Measure 6 has a '7' (dominant seventh) chord. Measure 7 has an 'М' (M) chord. Measure 8 has a '7' (dominant seventh) chord. The bass staff shows sustained chords with asterisks.

Measures 9-12. Measure 9 has an 'М' (M) chord. Measure 10 has a 'Б+М' (B-flat + M) chord. Measure 11 has a 'Б' (B-flat) chord. Measure 12 has a 'Б+М' (B-flat + M) chord. The bass staff shows sustained chords with asterisks and a 'b*' marking in measure 11.

Measures 13-16. Measures 13-16 are marked 'rit.' (ritardando). Measure 13 has a '7' (dominant seventh) chord. Measure 14 has an 'М' (M) chord. Measure 15 has a '7' (dominant seventh) chord and a 'Б' (B-flat) chord. Measure 16 has a '7' (dominant seventh) chord. The treble staff features a rapid sixteenth-note run in measures 13-16.

Measures 17-20. Measures 17-20 are marked 'a tempo'. Measure 17 has a 'Б' (B-flat) chord. Measures 18-20 show a return to the rhythmic pattern of the first system, with sustained chords in the bass staff and moving notes in the treble staff.

2
21

Тихая ночь

М 7 Б

25

Б *

29

М М

33

М 7 М *

37

Б 7 Б М Б

41 Тихая ночь 3

41 Тихая ночь 3

45

45

49

49

53

53

57

57

7 УМ M

B

4
61

Тихая ночь

rit.

Measures 61-64 of the piece "Тихая ночь". The music is in 4/4 time. Measures 61 and 62 feature a treble staff with eighth-note patterns and a bass staff with chords marked "Б" and an asterisk (*). Measures 63 and 64 feature a treble staff with a rapid sixteenth-note run and a bass staff with chords marked "Б" and "7". The piece concludes with a final chord marked "Б" in the bass staff.

65

Measures 65-68. The treble staff contains half notes and quarter notes, while the bass staff contains a steady eighth-note accompaniment.

69

Measures 69-72. The treble staff continues with half notes and quarter notes, and the bass staff continues with the eighth-note accompaniment.

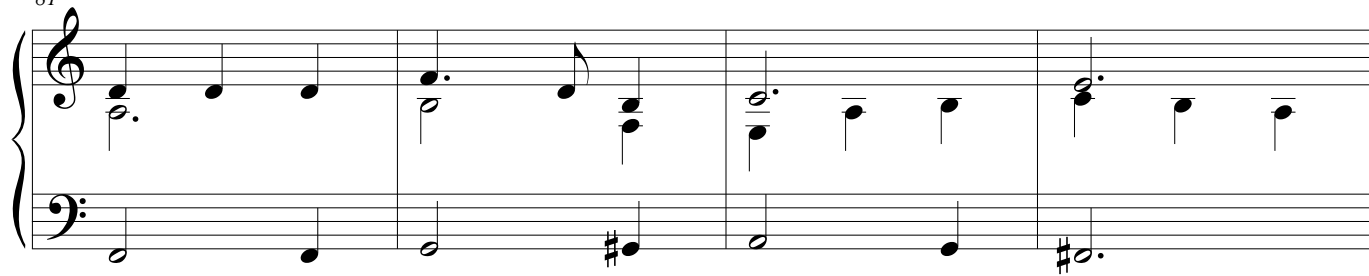
73

Measures 73-76. The treble staff features half notes and quarter notes, and the bass staff continues with the eighth-note accompaniment.

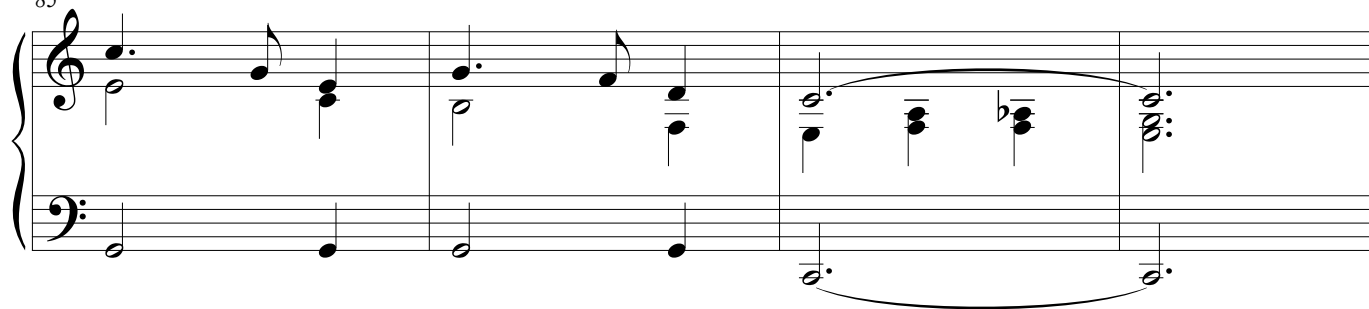
77

Measures 77-80. The treble staff features half notes and quarter notes, and the bass staff continues with the eighth-note accompaniment.

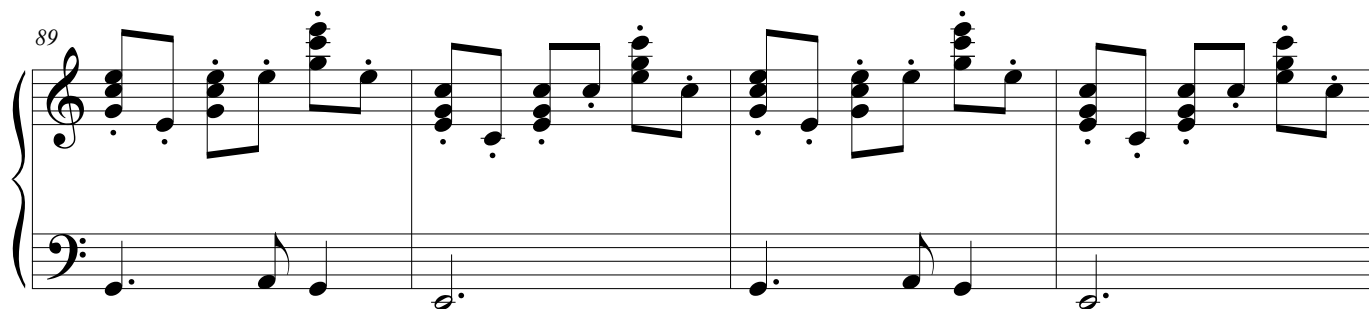
81



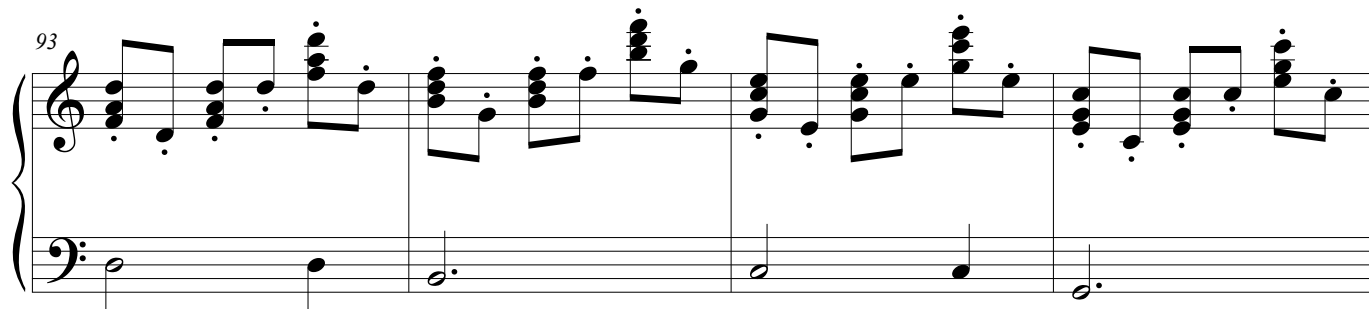
85



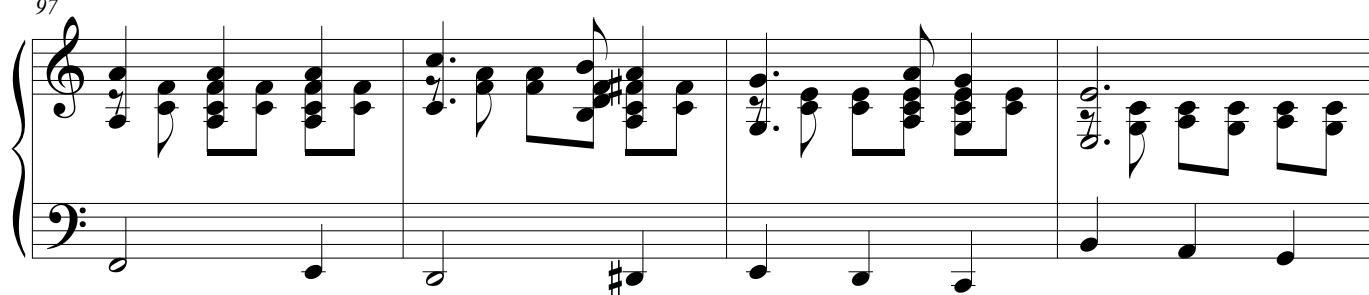
89



93



97



6
101

Тихая ночь

Measures 101-104. The score is in G major, 4/4 time. The right hand features a melody of eighth notes, while the left hand plays a steady eighth-note accompaniment. Chords are labeled with Cyrillic letters: 'Б' (B) in measures 101, 102, and 103. Asterisks (*) are placed above the left-hand accompaniment in measures 102 and 103. The piece concludes in measure 104 with a final chord.

105

rit.

Measures 105-108. The tempo is marked *rit.* (ritardando). The right hand continues with eighth-note patterns, and the left hand plays a simple bass line. The piece ends in measure 108 with a final chord.

109

rit.

Measures 109-112. The tempo is marked *rit.* (ritardando). The right hand features a melody with a long phrase spanning measures 110 and 111, marked with a slur. The left hand plays a steady eighth-note accompaniment. Chords are labeled with Cyrillic letters: 'Б' (B) in measures 109, 111, and 112. A '7' (seventh) is indicated above the left-hand accompaniment in measure 110. Asterisks (*) are placed above the left-hand accompaniment in measures 109 and 111. The piece concludes in measure 112 with a final chord.