

Piano

На Рождество

С. Денисова
Аранж. С. Маген

Вступ

The introduction consists of four measures. The right hand plays a series of chords in a 9/8 time signature, while the left hand plays a continuous eighth-note bass line.

Measures 4 to 6. The right hand continues with chords, and the left hand plays a steady eighth-note pattern. Measure 6 ends with a double bar line and a 12/8 time signature change.

Measures 7 to 9. Measure 7 starts with a 12/8 time signature. Measure 9 ends with a double bar line, a first ending bracket labeled '1', and a 9/8 time signature change.

Measures 10 to 13. The right hand plays a continuous eighth-note melody, and the left hand plays a steady eighth-note bass line. Measure 13 ends with a double bar line.

Measures 14 to 16. Measure 14 starts with a 12/8 time signature. Measure 16 ends with a double bar line and a 9/8 time signature change.

17

Measures 17-19. The key signature is one flat (B-flat). Measure 17 is in 4/4 time. Measures 18 and 19 are in 3/4 time. The notation consists of a treble and bass staff. The treble staff contains eighth and quarter notes, while the bass staff contains half and quarter notes.

20

Measures 20-23. The key signature is one flat (B-flat). Measure 20 is in 9/8 time. Measures 21, 22, and 23 are in 4/4 time. The notation consists of a treble and bass staff. The treble staff contains eighth and quarter notes, while the bass staff contains half and quarter notes.

24

Measures 24-26. The key signature is one flat (B-flat). Measures 24 and 25 are in 4/4 time. Measure 26 is in 12/8 time. The notation consists of a treble and bass staff. The treble staff contains eighth and quarter notes, while the bass staff contains half and quarter notes.

27

Measures 27-29. The key signature is one flat (B-flat). Measures 27 and 28 are in 12/8 time. Measure 29 is in 9/8 time. The notation consists of a treble and bass staff. The treble staff contains eighth and quarter notes, while the bass staff contains half and quarter notes. A circled '2' is placed above measure 29.

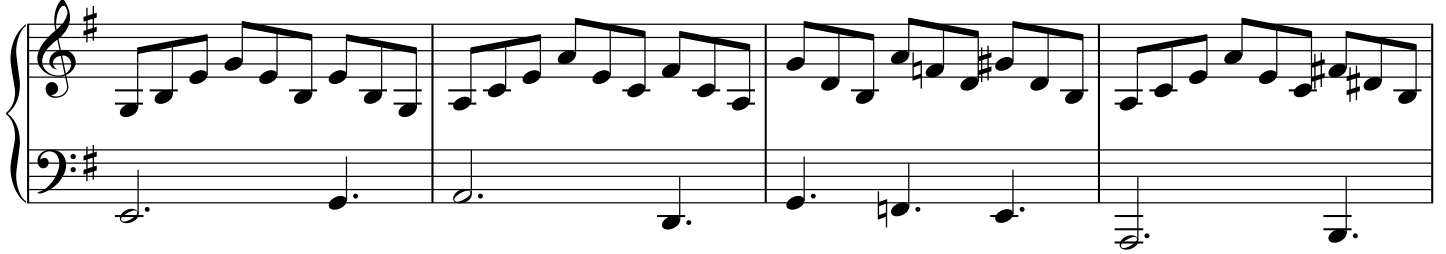
30

Measures 30-33. The key signature is one sharp (F-sharp). Measures 30, 31, and 32 are in 4/4 time. Measure 33 is in 9/8 time. The notation consists of a treble and bass staff. The treble staff contains eighth and quarter notes, while the bass staff contains half and quarter notes.

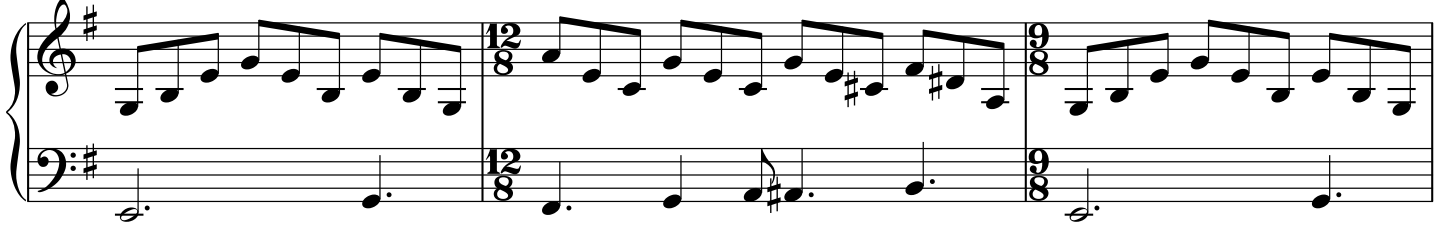
34

Measures 34-37. The key signature is one sharp (F-sharp). Measures 34, 35, and 36 are in 4/4 time. Measure 37 is in 9/8 time. The notation consists of a treble and bass staff. The treble staff contains eighth and quarter notes, while the bass staff contains half and quarter notes. A circled '3' is placed above measure 37.

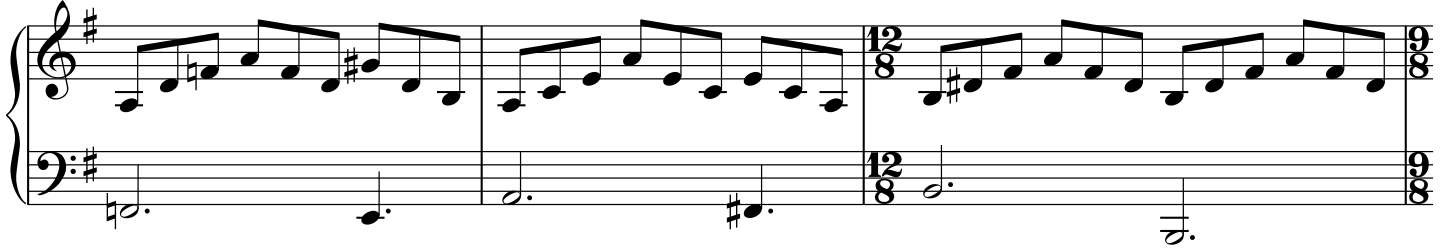
38



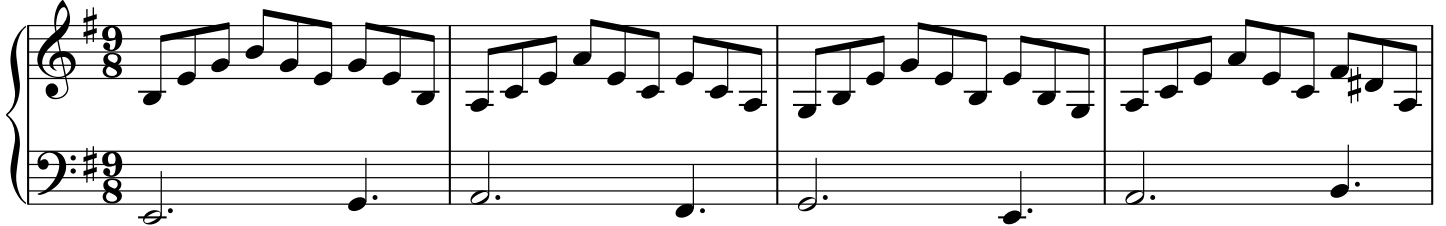
42



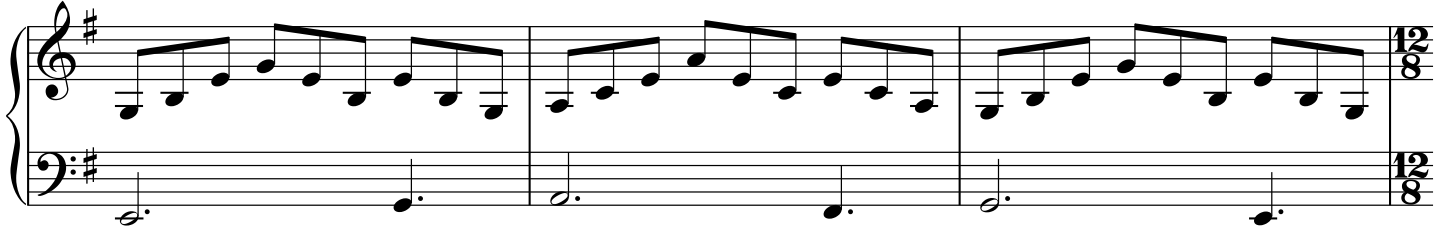
45



48



52



55

