

СТРХ ЛИ ДУШУ УГНЕТАЕТ

Страх ли душу угнетает, о Господь держи!

Иль сомнение смущает, Ты меня держи!

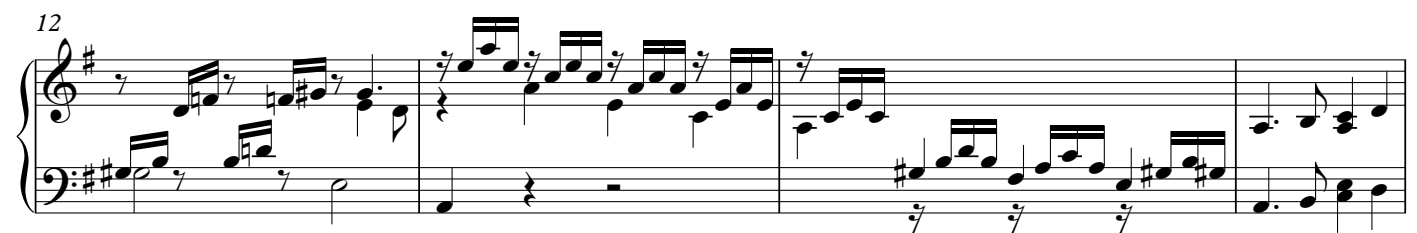
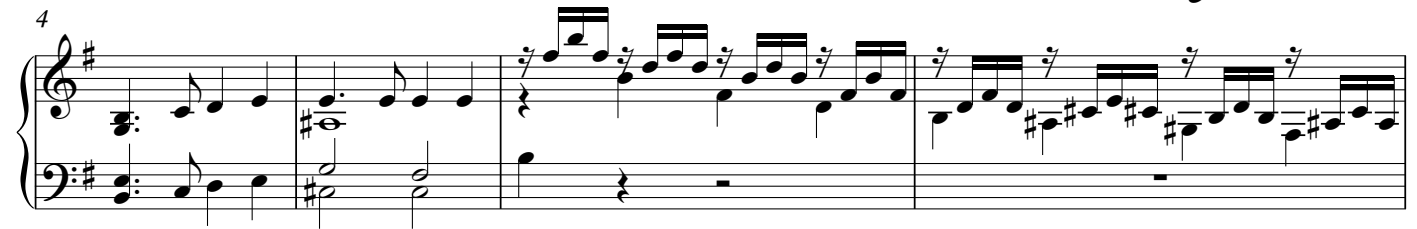
За руку держи, за руку держи!

О Спаситель всемогущий, Сам всегда держи!

Обр. для органа В.Кевра

PRELUDIE

$\text{♩} = 90$



32

System 32-36: Treble and bass staves. Treble staff has a key signature of one sharp (F#) and a common time signature. Bass staff has a key signature of two sharps (F# and C#). The system contains five measures of music with various note values and rests.

37

Инт.

System 37-41: Treble and bass staves. Treble staff has a key signature of one sharp (F#) and a common time signature. Bass staff has a key signature of two sharps (F# and C#). The system contains five measures of music. A trill (T) is marked above the treble staff in measure 39.

42

T

System 42-46: Treble and bass staves. Treble staff has a key signature of one sharp (F#) and a common time signature. Bass staff has a key signature of two sharps (F# and C#). The system contains five measures of music. A trill (T) is marked above the treble staff in measure 44.

47

T(увелич.)

System 47-50: Treble and bass staves. Treble staff has a key signature of one sharp (F#) and a common time signature. Bass staff has a key signature of two sharps (F# and C#). The system contains four measures of music. A trill (T) is marked above the treble staff in measure 48, with the instruction "(увелич.)" (increase) written below it.

51

T2

System 51-55: Treble and bass staves. Treble staff has a key signature of one sharp (F#) and a common time signature. Bass staff has a key signature of two sharps (F# and C#). The system contains five measures of music. A trill (T2) is marked above the treble staff in measure 53.

56

T

System 56-59: Treble and bass staves. Treble staff has a key signature of one sharp (F#) and a common time signature. Bass staff has a key signature of two sharps (F# and C#). The system contains four measures of music. A trill (T) is marked above the treble staff in measure 57.

60

System 60-62: Treble and bass staves. Treble staff has a key signature of one sharp (F#) and a common time signature. Bass staff has a key signature of two sharps (F# and C#). The system contains three measures of music, ending with a double bar line.