

# Той день

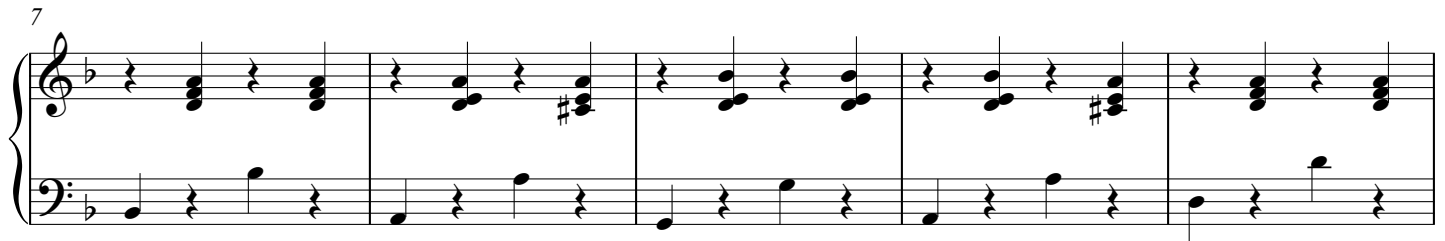
Someday

Piano

Укр. текст Л. Усік

Слова і музика Патриція Оуенс  
Апр. для хору Сергій Хащук

Moderately slow



29 *a tempo*

Measures 29-33 of the piano score. The key signature is two sharps (F# and C#). The tempo marking is *a tempo*. The dynamic marking is *mp*. The music features a steady eighth-note accompaniment in the bass and a melody in the treble with various intervals and rests.

34

Measures 34-38 of the piano score. The key signature changes to one sharp (F#). The music continues with a similar accompaniment pattern, featuring some chords and melodic lines in both staves.

39

Measures 39-44 of the piano score. The key signature changes to one flat (Bb). The music becomes more complex with dense chords and rapid melodic passages in both staves.

45

Measures 45-48 of the piano score. The key signature changes to two flats (Bb and Eb). The dynamic marking is *mp*. The music features a steady eighth-note accompaniment in the bass and a melody in the treble.

49

Measures 49-53 of the piano score. The key signature changes to three flats (Bb, Eb, and Ab). The music continues with a similar accompaniment pattern, featuring some chords and melodic lines in both staves.

54

Measures 54-58 of a piano piece. The key signature has three flats (B-flat, E-flat, A-flat). The music is in 4/4 time. Measure 54 features a complex chordal texture in the right hand with some movement, while the left hand plays a steady eighth-note pattern. Measures 55-58 continue with dense chords and melodic fragments in the right hand, and sustained notes or simple patterns in the left hand.

59

Measures 59-62. Measure 59 shows a change in the right-hand texture with more defined chords. Measures 60-61 continue with similar chordal structures. Measure 62 is marked *rit.* (ritardando) and features a final chord in the right hand over a sustained note in the left hand.

63

*a tempo*

Measures 63-67. Measure 63 is marked *a tempo*. The right hand plays a series of chords, while the left hand has a continuous eighth-note line. Measures 64-66 continue this pattern. Measure 67 is marked *rit.* (ritardando) and features a final chord in the right hand over a sustained note in the left hand, ending with a double bar line.