

## Чудная милость Божья

Arr. VPZ

Con moto

1

2

3

4

5

6

7

8

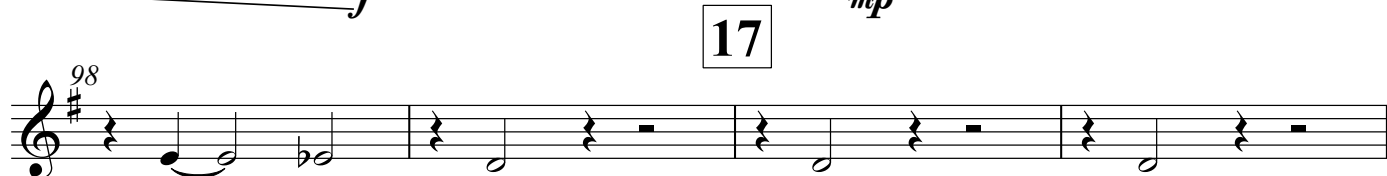
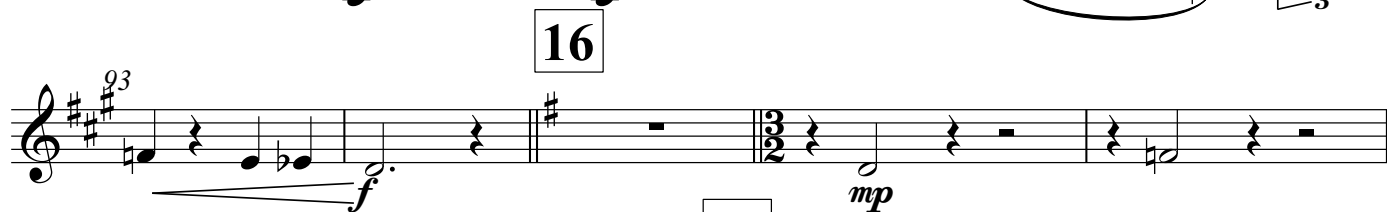
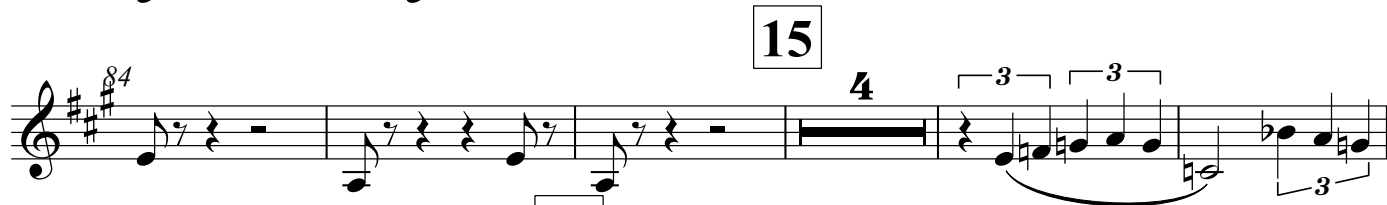
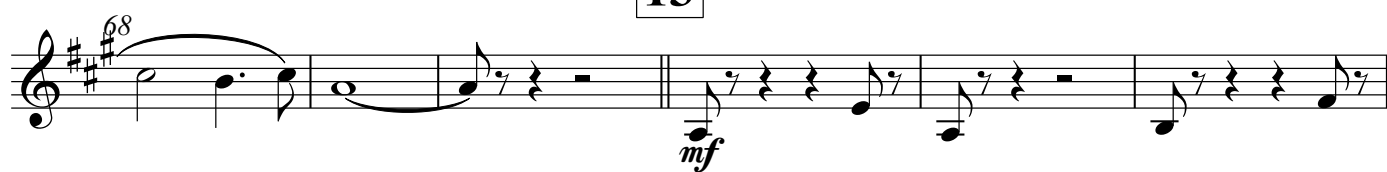
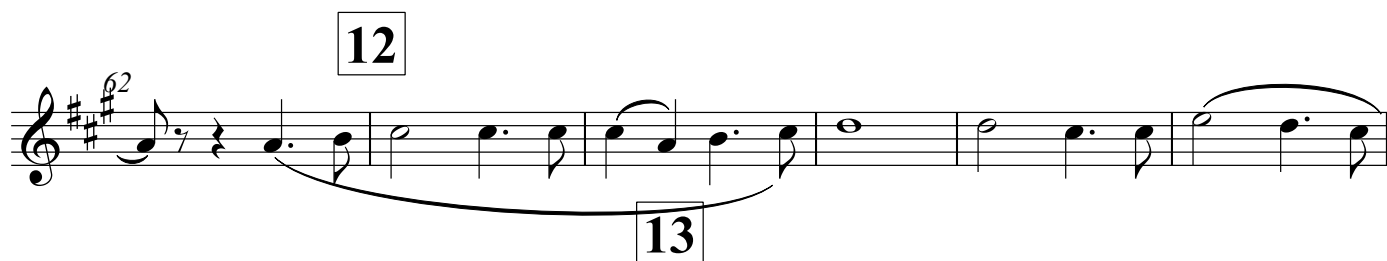
9

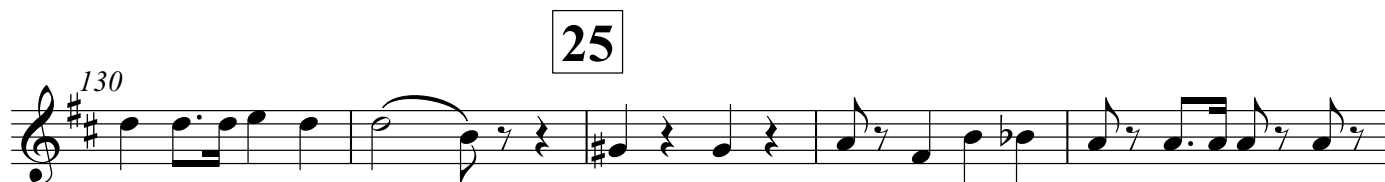
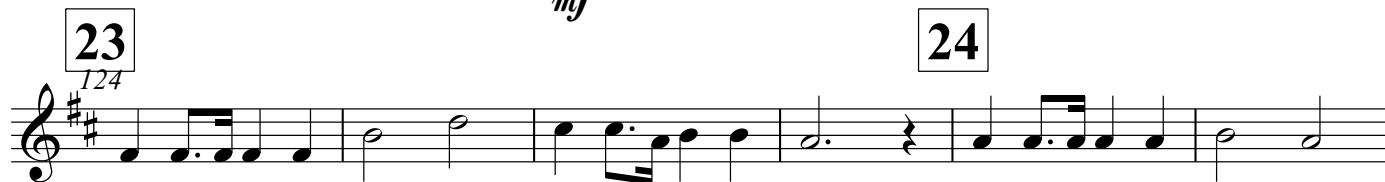
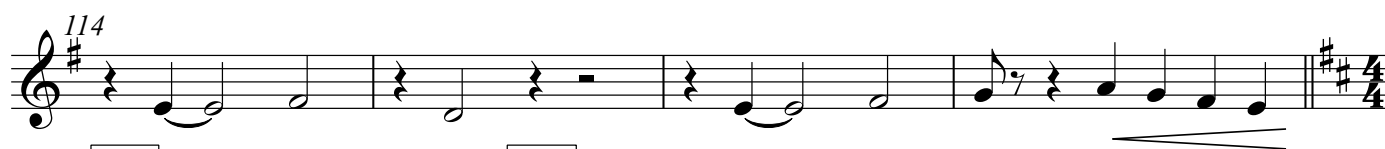
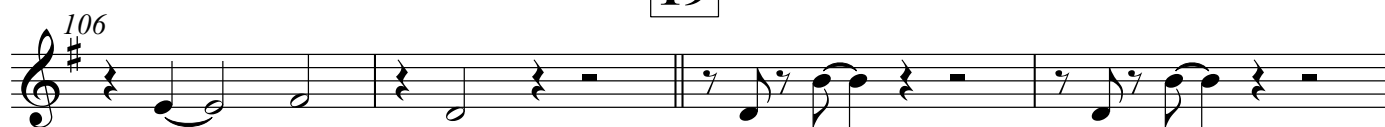
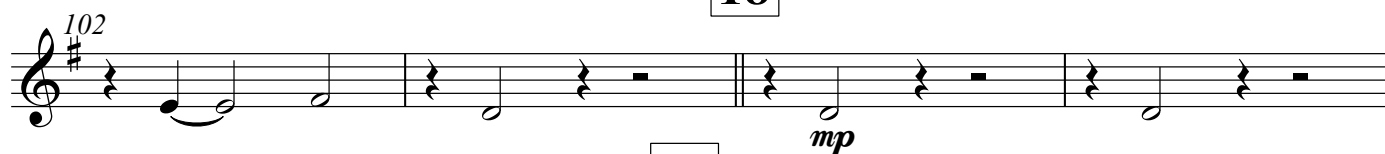
*f*

*mf*

*mf*

*p*





149



A single staff of music in treble clef with a key signature of one sharp (F#). The notation consists of five measures. Measure 149 starts with a treble clef and a sharp sign, followed by a quarter rest, an eighth note G4, a quarter note F#4, and a quarter note E4. Measure 150 begins with a quarter rest, followed by an eighth note G4, a quarter note F#4, and a half note E4. Measure 151 contains an eighth note G4, a quarter note F#4, an eighth note E4, a quarter rest, an eighth note D4, and a quarter rest. Measure 152 starts with a quarter rest, followed by an eighth note D4, a quarter note C4, and a quarter note B3. Measure 153 begins with a quarter rest, followed by an eighth note B3, a quarter note A3, and a half note G3. The staff concludes with a double bar line.