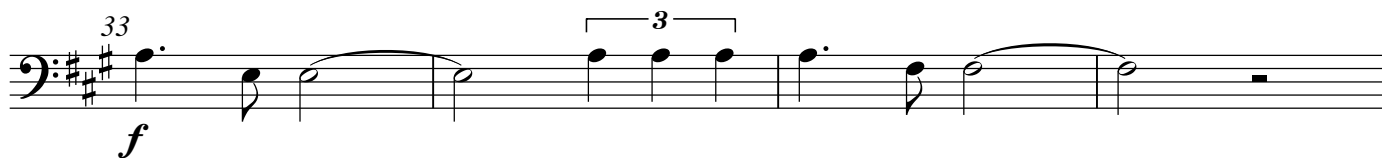
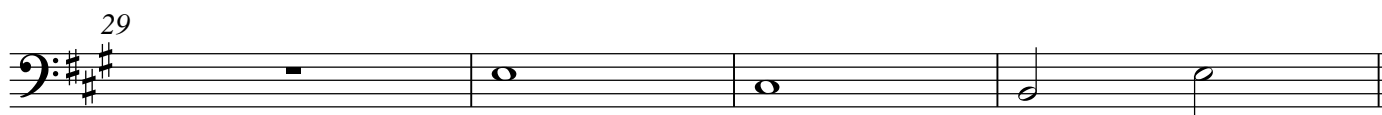
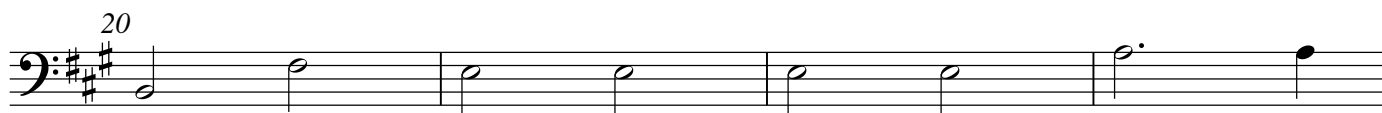
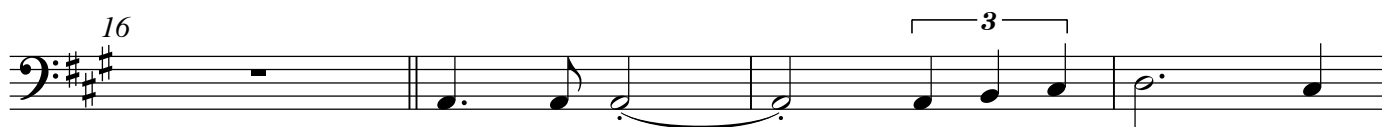
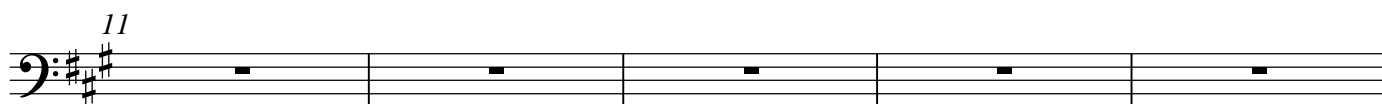
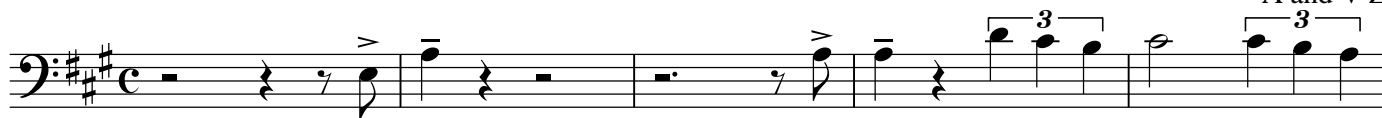


Bassoon

Величие (Majesty)

Arrangement by
A and V Z



Bassoon

37

37


41

Example 41 is a single-staff musical score in bass clef with a key signature of one flat. The melody is written in eighth and sixteenth notes, featuring various articulations such as accents, slurs, and ties.

47

Musical score for the bass line of 'The Rose Tree'. The key signature is one flat (B-flat). The score begins with two measures of rest. The third measure contains a triplet of eighth notes (G2, F2, E2) marked with a '3' and a bracket below. The fourth measure contains a triplet of eighth notes (D2, C2, B1) marked with a '3' and a bracket below. The fifth measure contains a dotted quarter note (G2) followed by an eighth rest. The sixth measure contains a half note (F2) with a slur above it. The seventh measure contains a half note (E2) with a slur above it. The eighth measure contains a triplet of eighth notes (D2, C2, B1) marked with a '3' and a bracket above. The ninth measure contains a dotted quarter note (G2) followed by an eighth rest. The tenth measure contains a half note (F2).

61



61

62



Example 10

66

