

Всё наперед Господь предусмотрел!

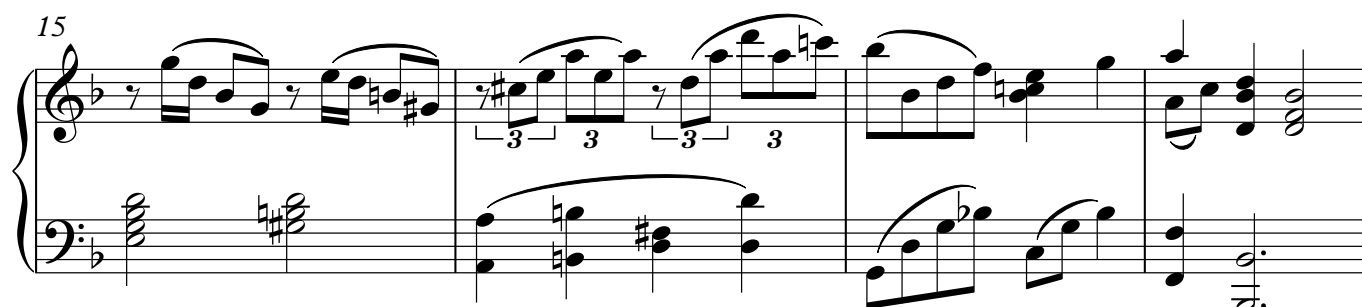
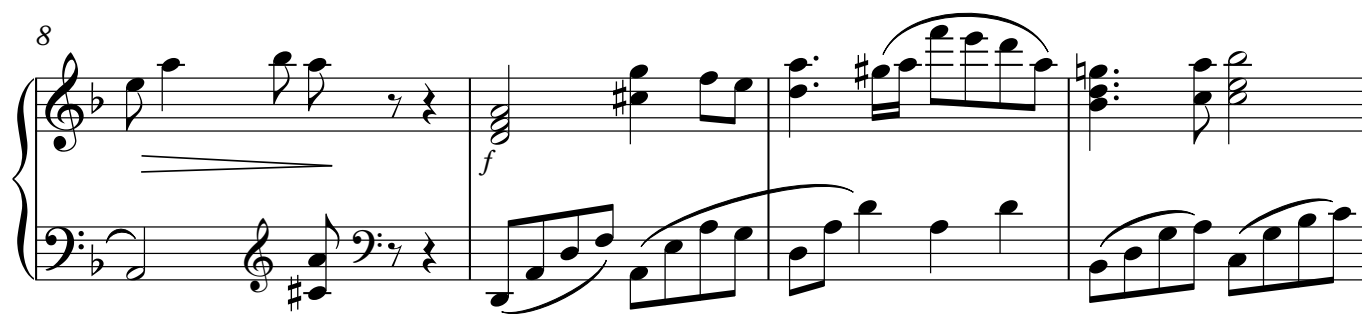
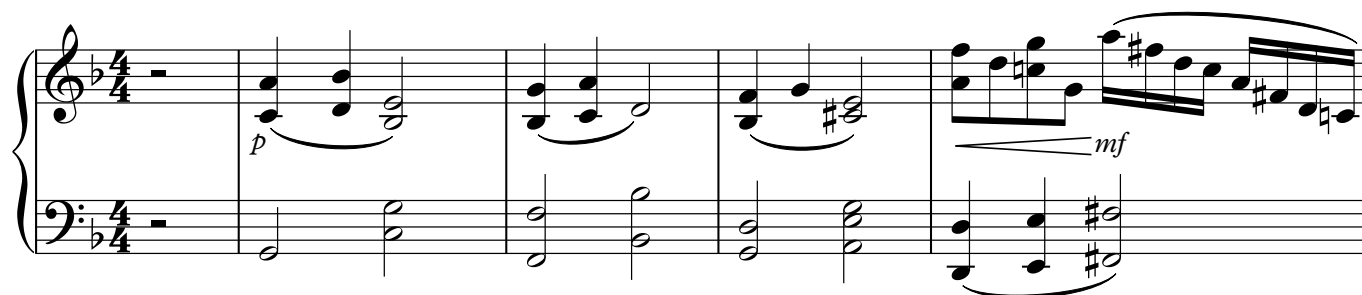
Piano

Gioioso ♩ = 90

Слова: Рыжов.А

Музыка: Бальжик.П

Инструментовка: Еманов.В



V.S.

Piano

2

19

Measures 19-22 of a piano piece. Measure 19 features a treble clef with a melodic line and a bass clef with a sustained chord. Measure 20 continues the treble melody and adds a bass line. Measures 21 and 22 are characterized by dense, rapid chords in both hands, with a fermata over the final chord in measure 22.

23

Measures 23-25. Measure 23 has a treble melody with a slur and a bass line. Measure 24 continues the treble melody. Measure 25 features a treble melody and a bass line with a *mp* (mezzo-piano) dynamic marking.

26

Measures 26-28. Measure 26 has a treble melody and a bass line. Measure 27 continues the treble melody. Measure 28 features a treble melody with a slur and a bass line, with a *f* (forte) dynamic marking.

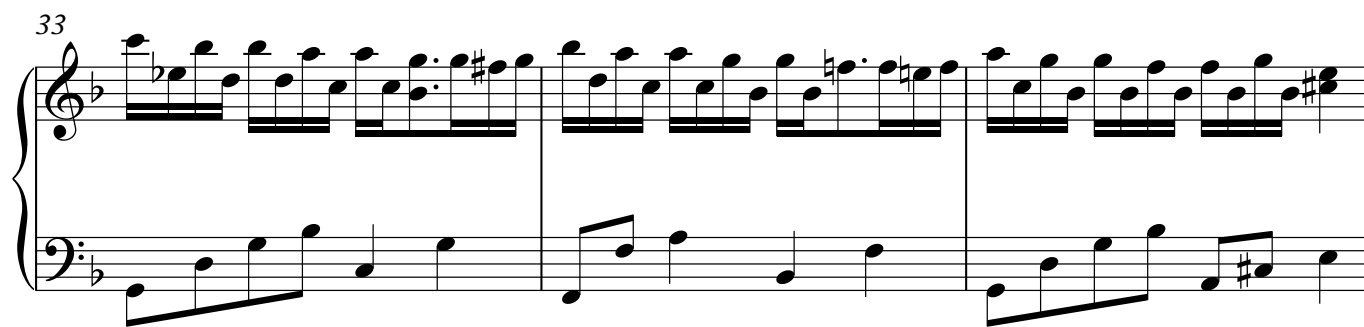
29

Measures 29-30. Measure 29 has a treble melody with a slur and a bass line. Measure 30 continues the treble melody and adds a bass line.

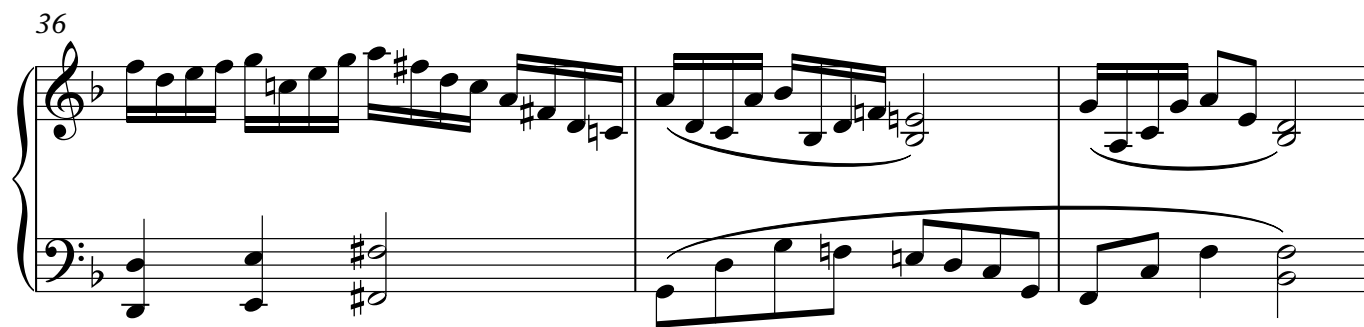
31

Measures 31-32. Measure 31 has a treble melody with a slur and a bass line. Measure 32 continues the treble melody and adds a bass line.

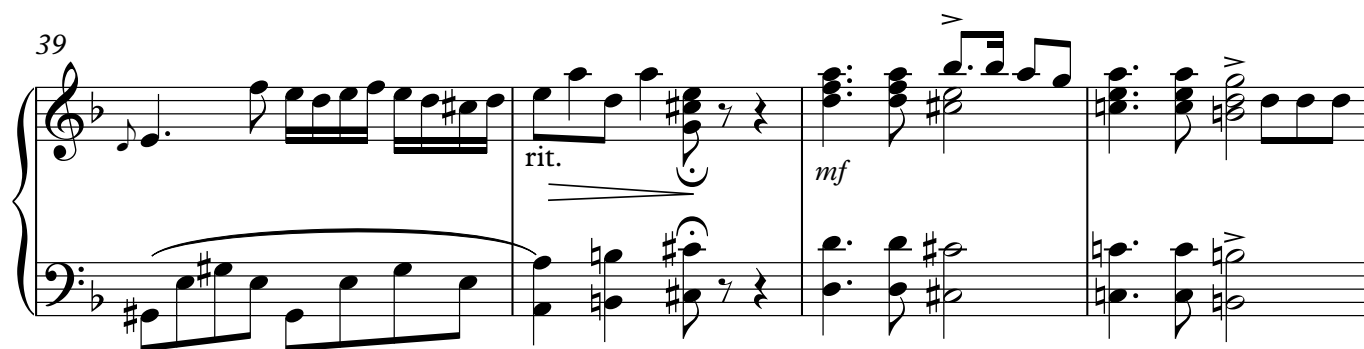
33



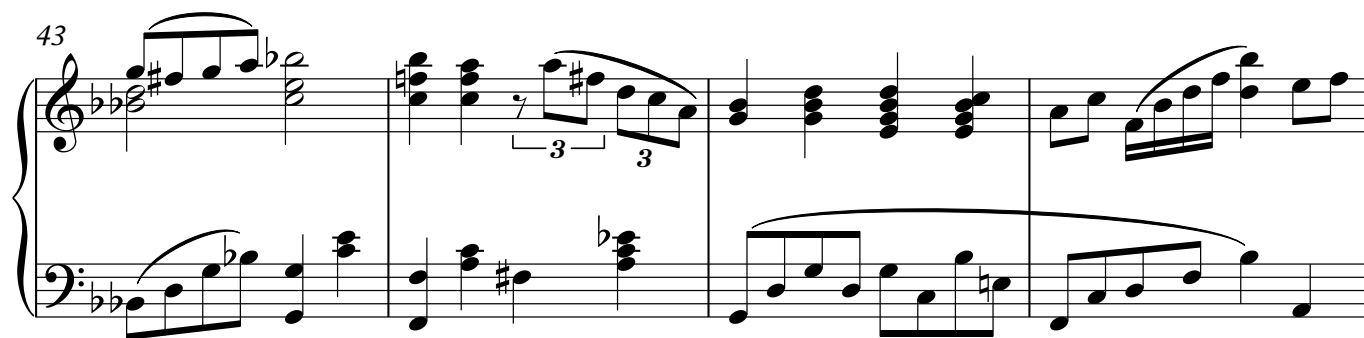
36



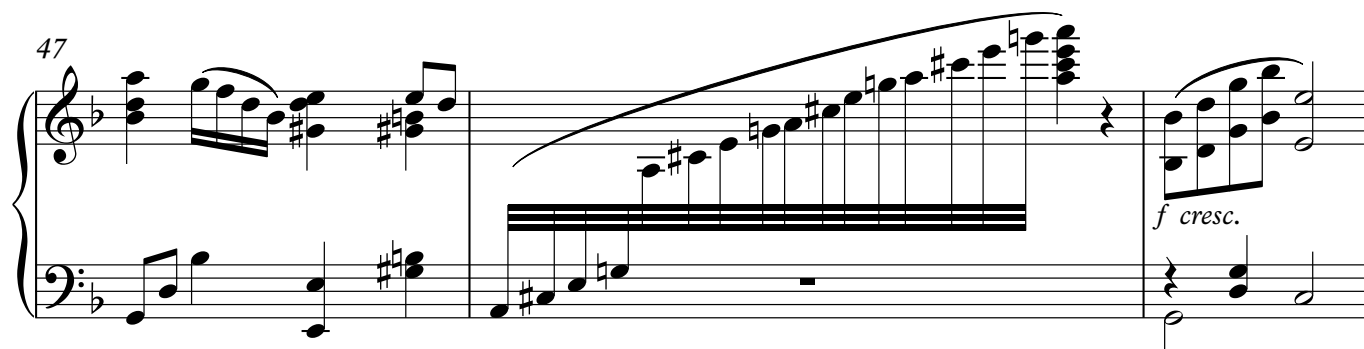
39



43



47



Piano

4

50

rit. .

mp

This system contains measures 50 and 51. Measure 50 features a piano introduction with a long, sweeping melodic line in the right hand and a supporting bass line in the left hand. A 'rit.' (ritardando) marking is placed above the right hand. Measure 51 begins with a mezzo-piano (mp) dynamic and continues the melodic and harmonic development.

52

This system contains measures 52 and 53. Measure 52 shows a continuation of the piano texture with chords and moving lines in both hands. Measure 53 concludes the system with a final chord and a double bar line.