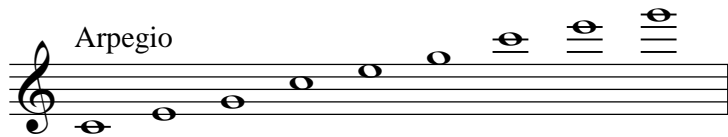
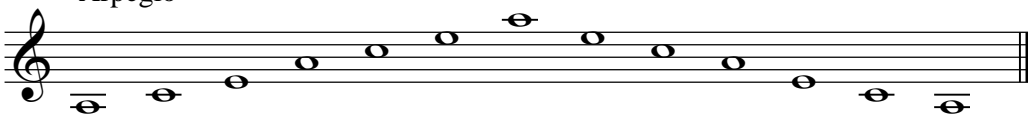
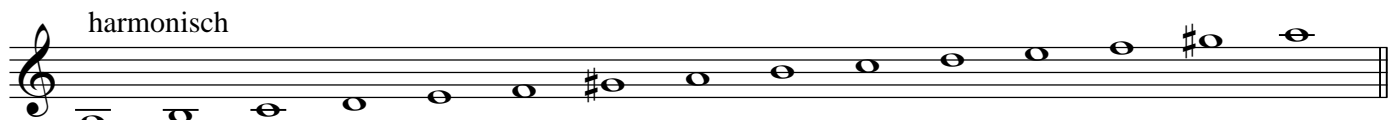
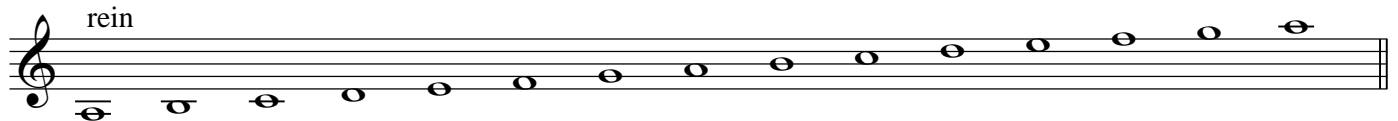


# Tonleitern

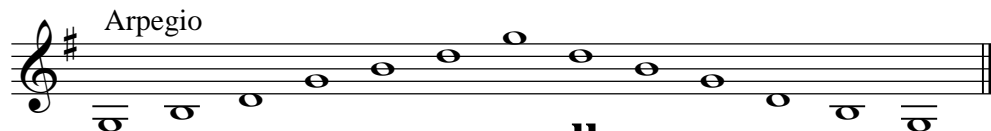
## C-dur



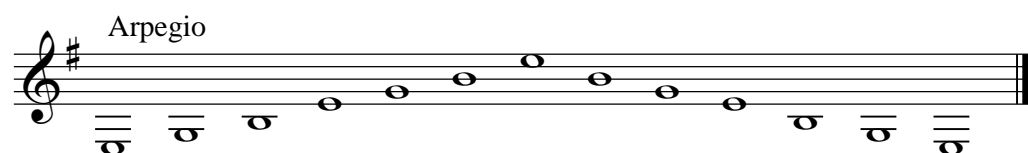
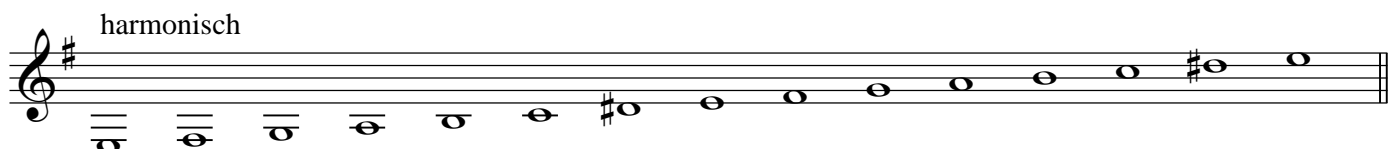
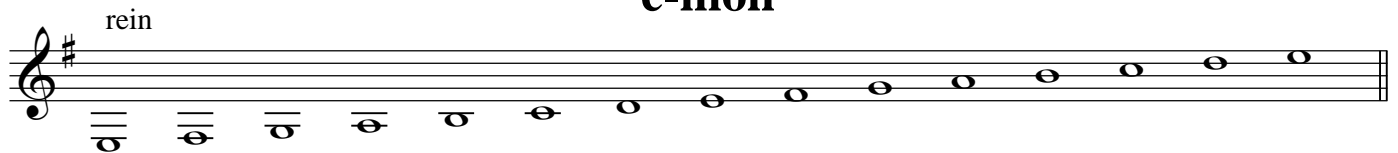
## a-moll

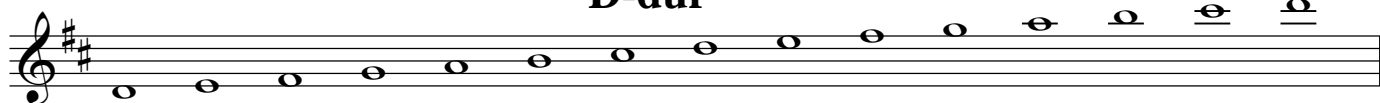


## G-dur



## e-moll



**D-dur**

Arpeggio

**h-moll**

rein



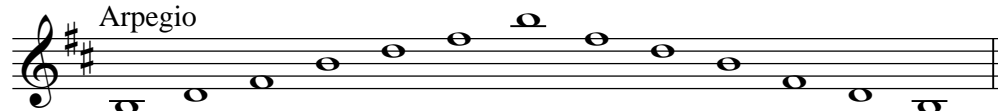
harmonisch



melodisch



Arpeggio

**A-dur**

Arpeggio

**fis-moll**

rein



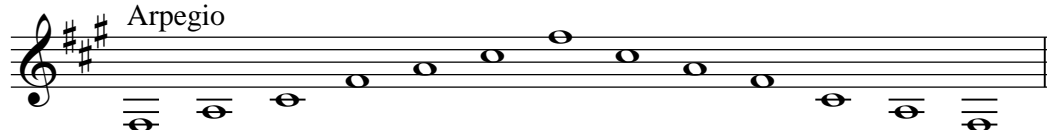
harmonisch



melodisch



Arpeggio

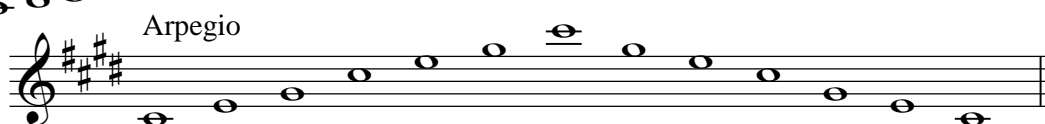


## E-dur

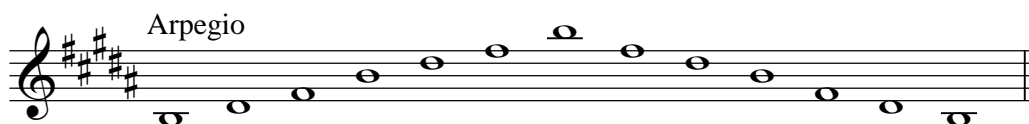
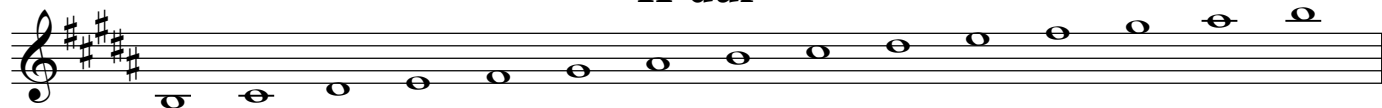
3



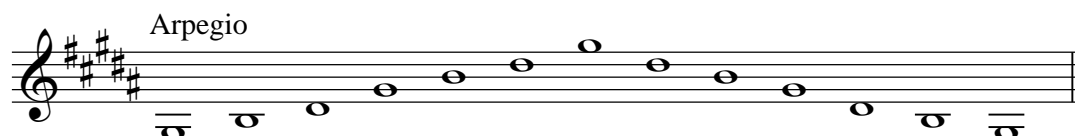
## cis-moll



## H-dur



## gis-moll



**Fis-dur**

Arpeggio

rein

**dis-moll**

harmonisch

melodisch

Arpeggio

**Des-dur**

Arpeggio

rein

**b-moll**

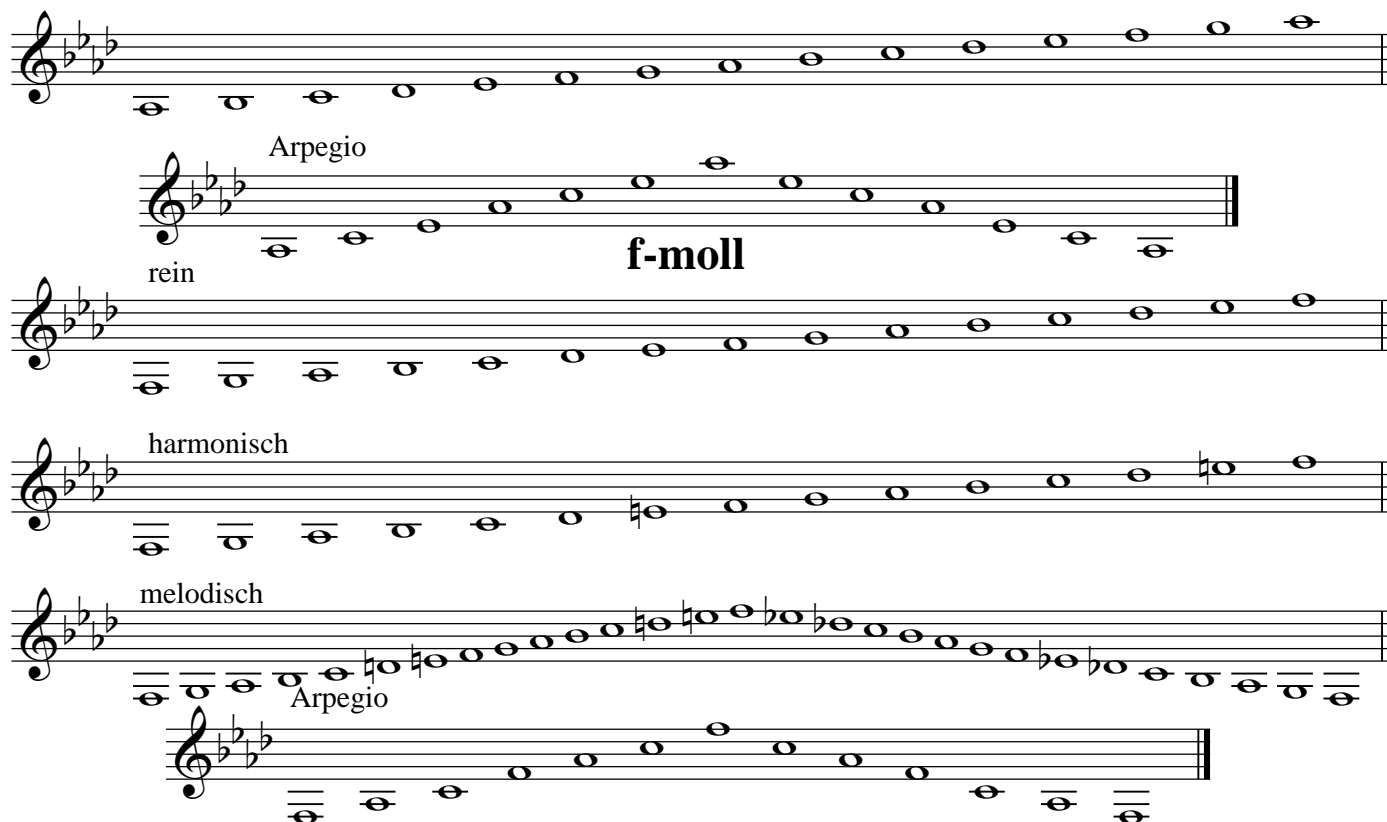
harmonisch

melodisch

Arpeggio

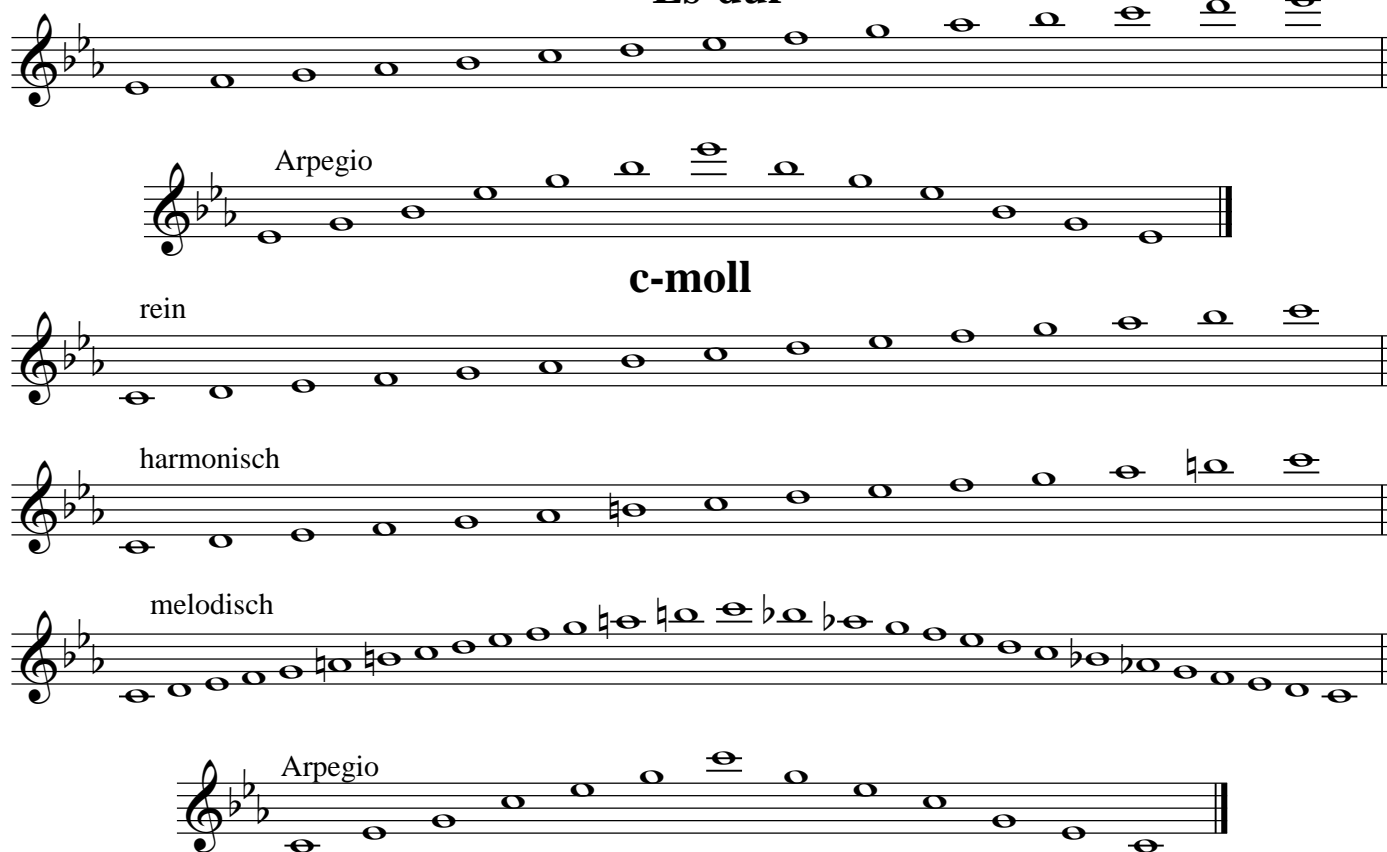
# As-dur

5

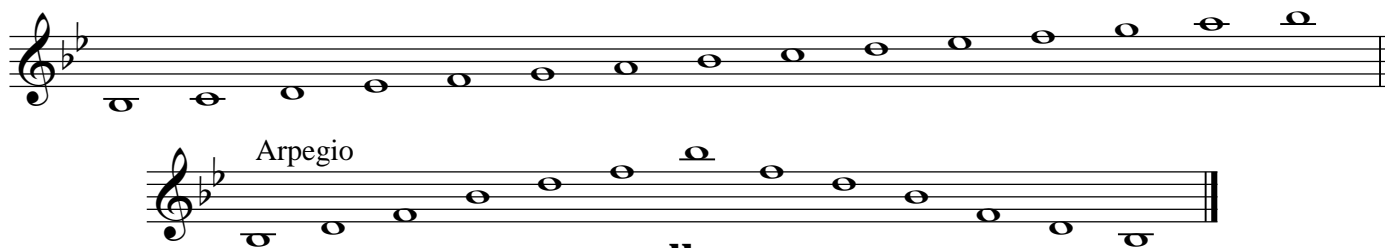
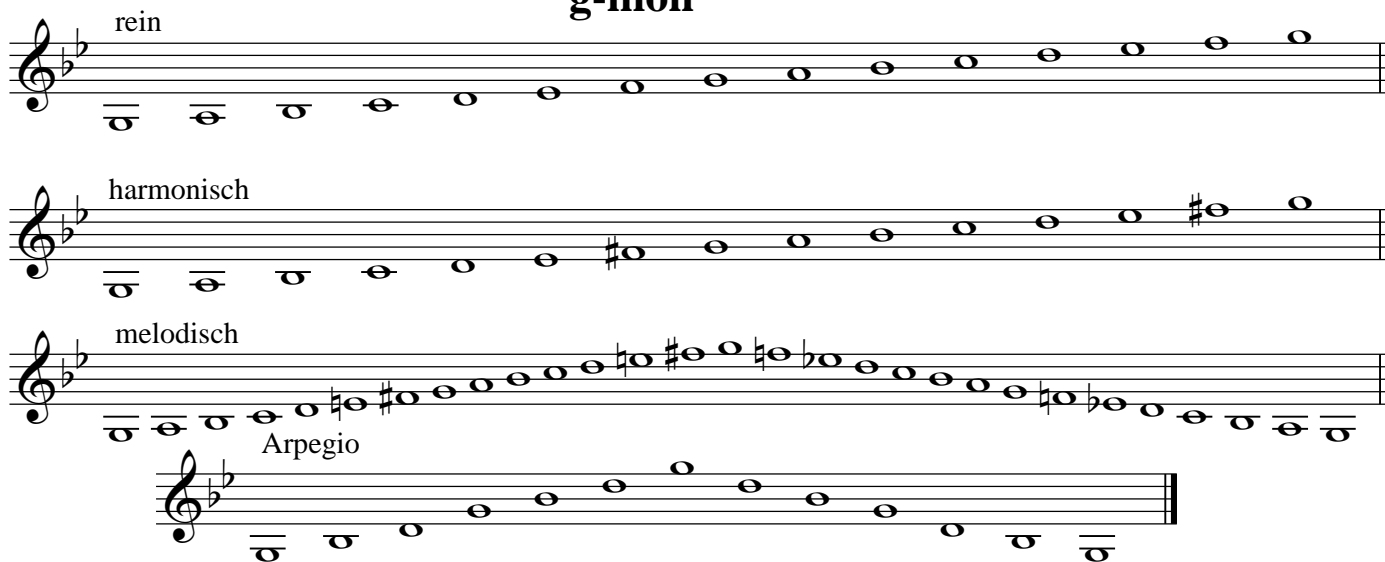
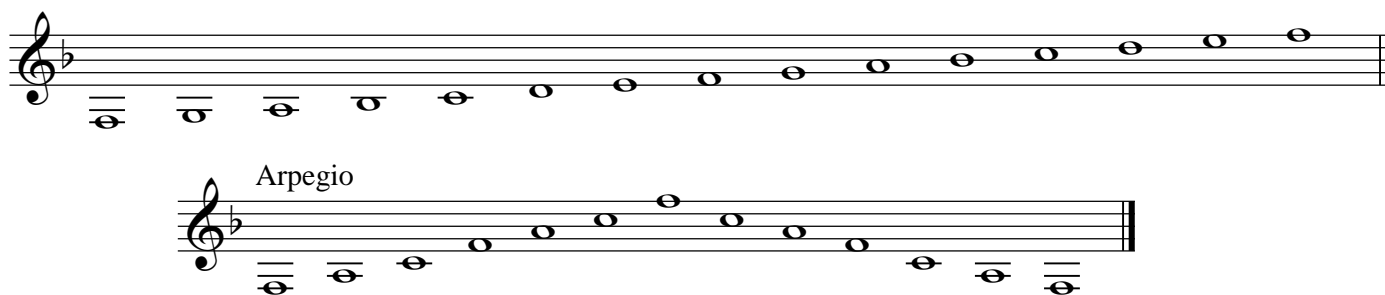


As-dur scale exercises in treble and bass clefs. The exercises include: a full scale run; an arpeggio exercise labeled "Arpeggio"; a scale exercise labeled "rein"; a scale exercise labeled "f-moll"; a scale exercise labeled "harmonisch"; a scale exercise labeled "melodisch"; and another arpeggio exercise labeled "Arpeggio".

# Es-dur



Es-dur scale exercises in treble and bass clefs. The exercises include: a full scale run; an arpeggio exercise labeled "Arpeggio"; a scale exercise labeled "c-moll"; a scale exercise labeled "rein"; a scale exercise labeled "harmonisch"; a scale exercise labeled "melodisch"; and another arpeggio exercise labeled "Arpeggio".

**B-dur****g-moll****F-dur****d-moll**