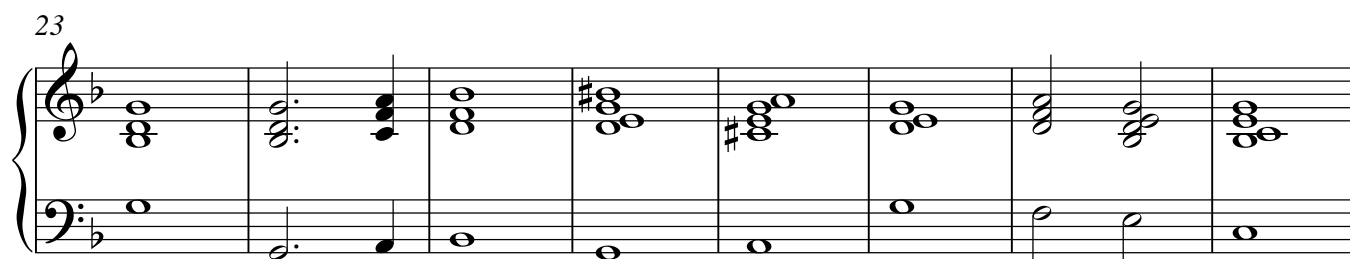
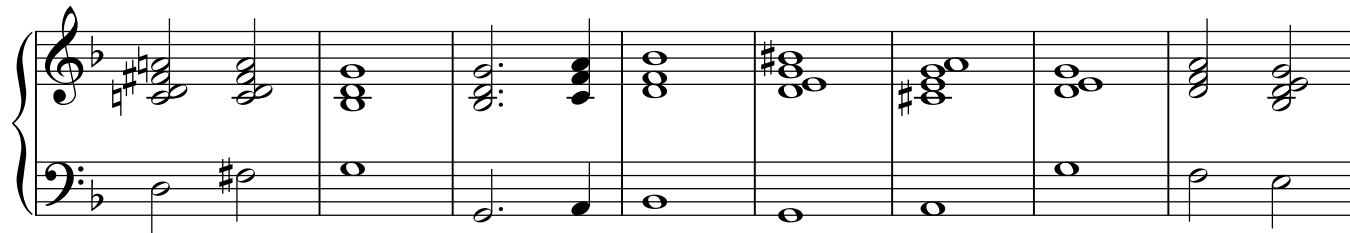


Klavier

Помышлять всегда о горнем



38



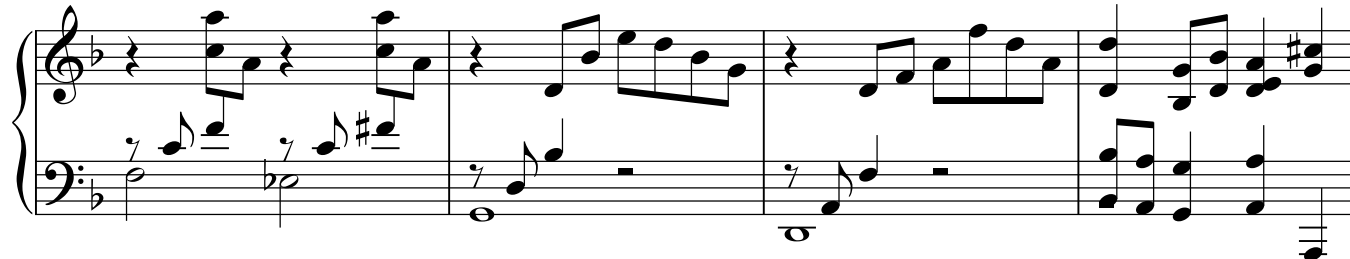
46



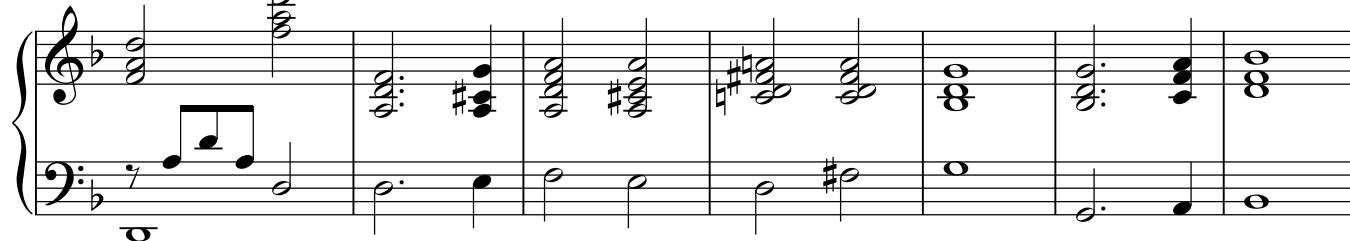
52



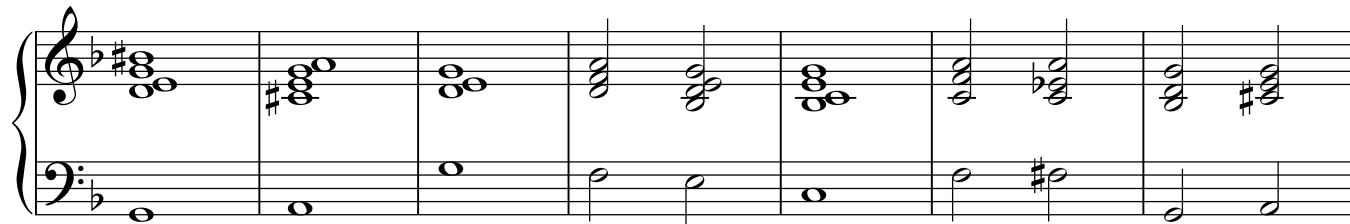
55



59



66



73

Measures 73-77 of a piano piece. The key signature has one flat (B-flat). Measure 73 features a treble staff with two chords (F4-A4 and F4-C5) and a bass staff with a half note F3. Measure 74 has a treble staff with a chord (F4-A4-Bb4) and a bass staff with a half note F#3. Measure 75 has a treble staff with a whole note chord (F4-A4) and a bass staff with a whole note F3. Measures 76 and 77 show a treble staff with a quarter-note melody (F4, A4, Bb4, A4) and a bass staff with a half-note accompaniment (F3, A3).

78

Measures 78-80 of a piano piece. Measure 78 has a treble staff with a quarter-note melody (F4, A4, Bb4, A4) and a bass staff with a half-note accompaniment (F3, A3). Measure 79 has a treble staff with a quarter-note melody (F4, A4, Bb4, A4) and a bass staff with a half-note accompaniment (F3, A3). Measure 80 has a treble staff with a quarter-note melody (F4, A4, Bb4, A4) and a bass staff with a half-note accompaniment (F3, A3).

81

Measures 81-83 of a piano piece. Measure 81 has a treble staff with a quarter-note melody (F4, A4, Bb4, A4) and a bass staff with a half-note accompaniment (F3, A3). Measure 82 has a treble staff with a whole note chord (F4-A4) and a bass staff with a whole note chord (F3-A3). Measure 83 has a treble staff with a quarter-note melody (F4, A4, Bb4, A4) and a bass staff with a half-note accompaniment (F3, A3).