

# ПРАЗДНИК ЖАТВЫ

Allegretto

Piano

*mp*

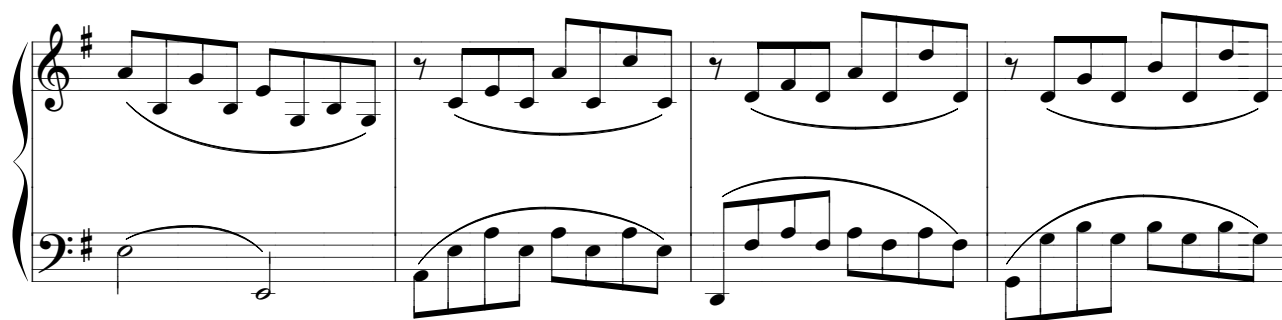
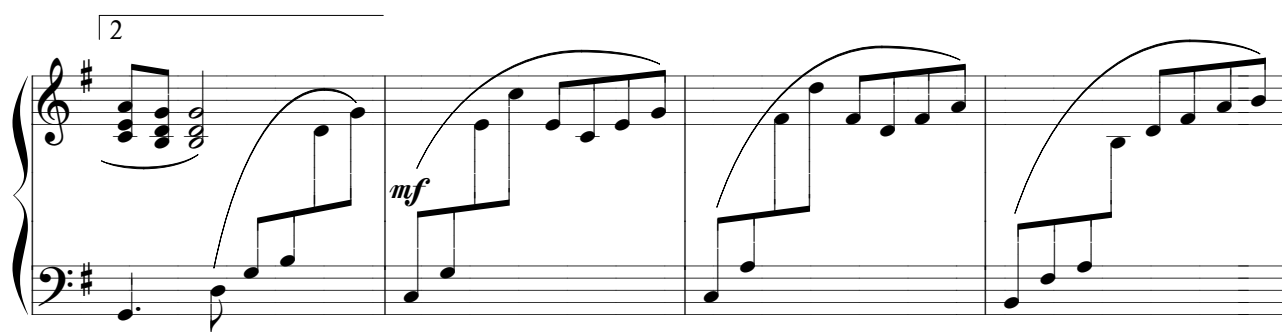
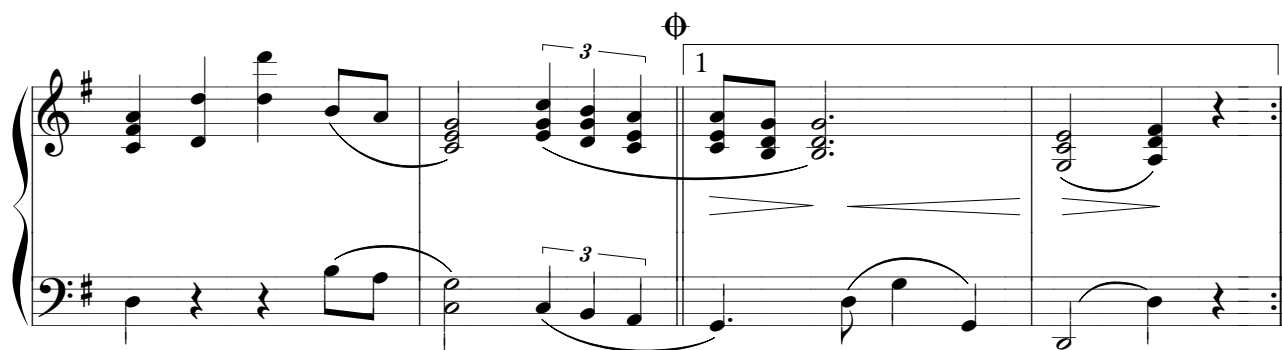
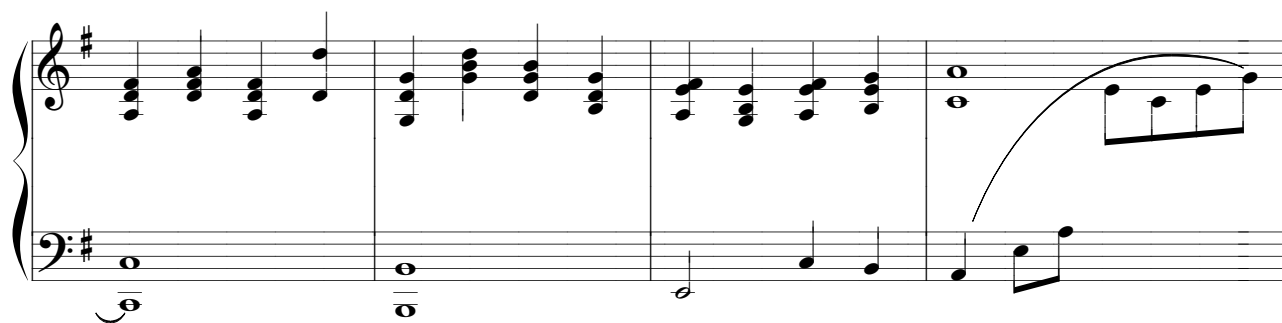
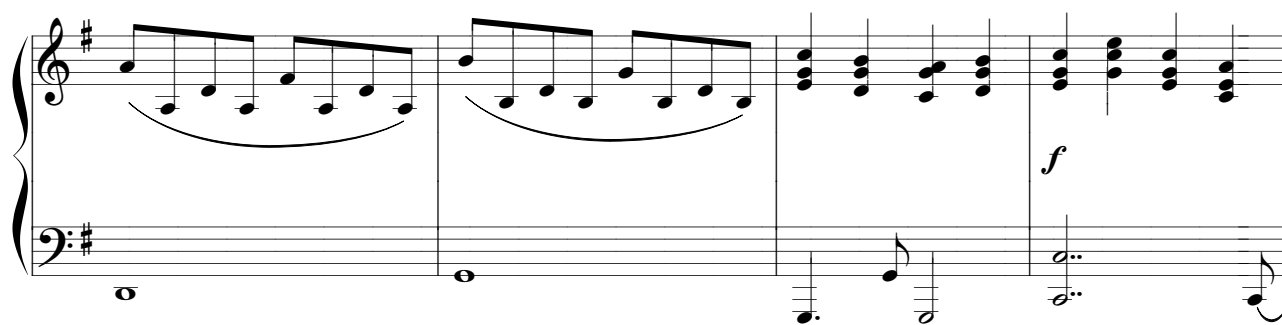
*p*

*mp*

*mf*

*mp cresc.*

Прунев



The image displays three systems of musical notation for piano, arranged vertically. Each system consists of a treble staff and a bass staff, both in the key of D major (indicated by two sharps: F# and C#).

- System 1:** The treble staff begins with a series of chords and single notes. A dynamic marking of *f* (forte) is present. The bass staff features a simple harmonic accompaniment with quarter and eighth notes.
- System 2:** This system introduces triplets, marked with a '3' and a bracket. The treble staff has more complex chordal textures, while the bass staff continues with a melodic line and harmonic support.
- System 3:** The final system includes a repeat sign with first and second endings. It features a trill ornament in the treble staff, marked with a trill symbol and a circled 'tr'. The piece concludes with a double bar line and repeat dots.