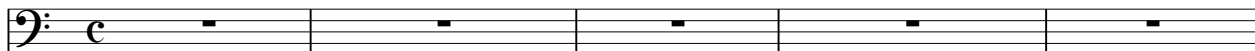


Славьте Творца

Радостно ♩ = 120

Solo B



Choir

f Про - славь-те Бо- га! Пой - те - на - ро - ды! Ра - дост-но



Trumpet 1

f



Trumpet 2

f



Baritone

f



Tuba

f



Piano

f



Радостно ♩ = 120

Violin I




Violin II



Viola



Violoncello



6

Solo B.

Musical notation for Solo Bass, starting with a whole rest and then a melodic phrase.

Славь - те Твор - ца и воз

Choir

Musical notation for the choir, including vocal staves and piano accompaniment. The lyrics "пой-те все на - ро - ды зем - ли!" are written below the vocal staves.

пой-те все на - ро - ды зем - ли!

Tpt.1

Musical notation for Trumpet 1, featuring a triplet.

Tpt.2

Musical notation for Trumpet 2, featuring a triplet.

Bar.

Musical notation for Baritone.

Tba.

Musical notation for Tuba.

Pno.

Musical notation for the piano accompaniment, including a first ending bracket and a *mf* dynamic marking.

Vln. I

Musical notation for Violin I.

Vln. II

Musical notation for Violin II.

Vla.

Musical notation for Viola.

Vc.

Musical notation for Violoncello.

11

Solo B. 
_ра - дуй-тесь в Нём, все на - ро - ды, с Ра - дость - ю чис - той слу-жи-те

Choir 

Tpt.1 

Tpt.2 

Bar. 

Tba. 

Pno. 

Vln. I 

Vln. II 

Vla. 

Vc. 

15

Solo B.

пред Е - го ли-цом с хва-лой. Славь - те Твор - ца и воз

Choir

Tpt.1

Tpt.2

Bar.

Tba.

Pno.

2

Vln. I

Vln. II

Vla.

Vc.

19

Solo B. 
ра - дуй-тесь в Нём, все на - ро - ды, бли - же к Твор - цу, все на
 

Choir 

Tpt.1 

Tpt.2 

Bar. 

Tba. 

Pno. 

Vln. I 

Vln. II 

Vla. 

Vc. 

23 3 accel.

Solo B. *ro-ды, с хва-лой и псал мом!*

Choir *Си - лен наш Бог и Е - го и - мя*

Tpt.1 *mf*

Tpt.2 *mf*

Bar. *mf*

Tba. *mf*

Pno.

Vln. I

Vln. II

Vla.

Vc.

Solo B.

Choir

Tpt.1

Tpt.2

Bar.

Tba.

Pno.

Vln. I

Vln. II

Vla.

Vc.

mf

слав - но на го - ре пред - веч - ной свя - тос - ти на го ре пред - веч - ной

mf

mp

mp

mp

3

3

Detailed description of the musical score: The score is for page 28 of a musical work. It features a choir and several instrumental parts. The choir parts (Soprano and Bass) have lyrics in Russian: "слав - но на го - ре пред - веч - ной свя - тос - ти на го ре пред - веч - ной". The instrumental parts include Solo B. (Bass), Tpt.1 and Tpt.2 (Trumpets), Bar. (Baritone), Tba. (Tuba), Pno. (Piano), Vln. I and Vln. II (Violins), Vla. (Viola), and Vc. (Cello). The score includes dynamic markings such as *mf* (mezzo-forte) and *mp* (mezzo-piano), and articulation like accents and slurs. There are also triplet markings (3) over some notes in the trumpet parts. The key signature has two sharps (F# and C#), and the time signature is 4/4.

Solo B.

Choir
свя - тос - ти, и в сте - нах гра - да Бо - жи - я, и в на - шем ми -

Tpt.1
mf

Tpt.2

Bar.

Tba.

Pno.

Vln. I

Vln. II

Vla.

Vc.

36 4 *f*

Solo B. *f* Славь - те Твор - ца и воз - ра - дуй - тесь в Нём, все на

Choir *mp* ре! Славь-те Твор-ца, да славь-те Твор-ца, и воз -

Tpt.1

Tpt.2

Bar. *3*

Tba. *3*

Pno. *mf* 4

Vln. I

Vln. II

Vla.

Vc.

40

Solo B. 
ро - ды, с ра - дость ю чис - той слу-жи-те пред Е - го ли-цом с хва

Choir 
ра - дуй-тесь в Нём, пой-те с хва-ло - ю, пой-те с хва-лой, славь - те,

Tpt.1 

Tpt.2 

Bar. 

Tba. 

Pno. 

Vln. I 

Vln. II 

Vla. 

Vc. 

5

44

Solo B.

лой.

Славь - те Твор - ца,

и воз

Choir

славь - те Твор - ца, о славь - те Твор - ца, воз - ра - дуй - тесь в Нём

Tpt.1

Tpt.2

Bar.

Tba.

Pno.

Vln. I

Vln. II

Vla.

Vc.

5

47

Solo B. ра - дуй - тесь в Нём, все на - ро - ды, бли - же к Твор

Choir о славь-те ра - дост-но все Твор - ца, бли-же к Твор-цу, да

Tpt.1

Tpt.2

Bar.

Tba.

Pno.

Vln. I

Vln. II

Vla.

Vc.

7

50

Solo B. *pu*
цу, все на - ро - ды, с хва - лой и псал - мом!

Choir
бли - же, к Твор - цу с хва - лой, все на - ро - ды зем - ли! Хва - ла Твор - цу, Ал - ли

Tpt.1 *mf*

Tpt.2 *mf*

Bar. *mf*

Tba. *mf*

Pno. *mf*

Vln. I *mf*

Vln. II *mf*

Vla. *mf*

Vc. *mf*

7

Solo B.

Choir

луй - я! Хва - ла Е - му, Ал - ли - луй - я! Хва - ла Твор - цу, Ал - ли

Tpt.1

Tpt.2

Bar.

Tba.

Pno.

Vln. I

Vln. II

Vla.

Vc.

58

1. 2.

Solo B.

Musical staff for Solo B. in bass clef, showing a whole rest followed by a double bar line and a repeat sign.

Choir

Musical staves for the choir, including vocal lines and piano accompaniment. The lyrics are: "луй - я. О славь - те Е - го! Хва го!"

луй - я. О славь - те Е - го! Хва го!

Tpt.1

Musical staff for Trumpet 1, featuring a triplet of eighth notes.

Tpt.2

Musical staff for Trumpet 2, featuring a triplet of eighth notes.

Bar.

Musical staff for Baritone, featuring a triplet of eighth notes.

Tba.

Musical staff for Trombone, featuring a triplet of eighth notes.

Pno.

Musical staves for Piano, showing accompaniment for the vocal parts.

Vln. I

Musical staff for Violin I, featuring a triplet of eighth notes.

Vln. II

Musical staff for Violin II, featuring a triplet of eighth notes.

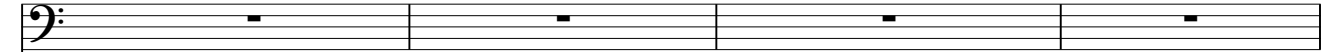
Vla.

Musical staff for Viola, featuring a triplet of eighth notes.

Vc.

Musical staff for Violoncello, featuring a triplet of eighth notes.

Solo B.



Choir

Славь - те Твор - ца и воз - ра - дуй-тесь в Нём, все на - ро - ды,

Tpt.1



Tpt.2



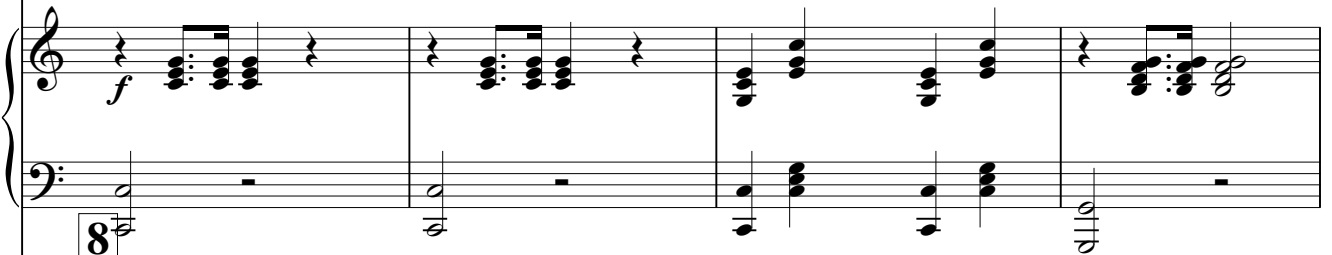
Bar.



Tba.



Pno.



Vln. I



Vln. II



Vla.



Vc.



66

Solo B.

Choir
с ра - дость - ю чис - той слу-жи-те пред Е - го ли-цом с хва - лой

Tpt.1

Tpt.2

Bar.

Tba.

Pno.

Vln. I

Vln. II

Vla.

Vc.

Solo B.

Choir
Славь - те Твор - ца и воз - ра - дуй-тесь в Нём, все на - ро - ды!

Tpt.1

Tpt.2

Bar.

Tba.

Pno.

Vln. I

Vln. II

Vla.

Vc.

74

Solo B.

Choir

Tpt.1

Tpt.2

Bar.

Tba.

Pno.

Vln. I

Vln. II

Vla.

Vc.

Solo B.

Choir

Bo ga! Пой - те - на - ро - ды! Ра - дост-но пой-те все на -

Tpt.1

Tpt.2

Bar.

Tba.

Pno.

Vln. I

Vln. II

Vla.

Vc.

Detailed description of the musical score: This page contains a full orchestral score for a choir. The choir part is at the top, with lyrics in Russian: "Bo ga! Пой - те - на - ро - ды! Ра - дост-но пой-те все на -". The instrumental parts include Solo B. (Bass), Tpt.1 and Tpt.2 (Trumpets), Bar. (Baritone), Tba. (Tuba), Pno. (Piano), Vln. I and Vln. II (Violins), Vla. (Viola), and Vc. (Violoncello). The score is written in a key with two sharps (D major or F# minor) and a 3/4 time signature. The vocal lines are in a soprano and bass clef. The instrumental parts are in various clefs, with the strings (Vln. I, Vln. II, Vla., Vc.) featuring prominent triplet patterns in the first three measures of each system.

84

Solo B.

Choir
ро - ды зем - ли! Ал - ли - луй - я, А - - -

Tpt.1
3

Tpt.2
3

Bar.

Tba.

Pno.

Vln. I

Vln. II

Vla.

Vc.

Detailed description of the musical score: This page contains a full orchestral score for measures 84-86. The top staff is for Solo B. in bass clef, which is mostly silent. Below it is the Choir part with vocal lines in treble and bass clefs, including the lyrics 'ро - ды зем - ли! Ал - ли - луй - я, А - - -'. The woodwind section includes Tpt.1 and Tpt.2 (trumpets) with a triplet of eighth notes in the first measure, Bar. (baritone), and Tba. (trombone). The piano part (Pno.) is shown in grand staff. The string section consists of Vln. I and Vln. II (violins), Vla. (viola), and Vc. (violin). The score features various musical notations such as triplets, slurs, and rests.

Solo B.

Choir
минь! Ал - ли - луй - я, А мфнь!

Tpt.1

Tpt.2

Bar.

Tba.

Pno.

Vln. I

Vln. II

Vla.

Vc.

The musical score for page 87 features a choir and an orchestra. The choir part includes the lyrics "минь! Ал - ли - луй - я, А мфнь!". The orchestral parts include Solo B., Tpt.1, Tpt.2, Bar., Tba., Pno., Vln. I, Vln. II, Vla., and Vc. The score is written in a key with two sharps (F# and C#) and a 3/4 time signature. The music is marked with a forte (ff) dynamic. The score is divided into three measures. The first measure shows the choir and orchestra entering. The second measure shows the choir and orchestra continuing. The third measure shows the choir and orchestra concluding. The score is written in a standard musical notation with a grand staff for the piano and a grand staff for the strings. The choir part is written in a grand staff with a soprano and bass line. The Solo B. part is written in a bass clef. The Tpt.1 and Tpt.2 parts are written in a treble clef with a key signature of two sharps. The Bar. part is written in a treble clef with a key signature of two sharps. The Tba. part is written in a bass clef with a key signature of two sharps. The Pno. part is written in a grand staff with a key signature of two sharps. The Vln. I and Vln. II parts are written in a treble clef with a key signature of two sharps. The Vla. part is written in a alto clef with a key signature of two sharps. The Vc. part is written in a bass clef with a key signature of two sharps. The score includes dynamic markings such as ff (fortissimo) and a crescendo hairpin. The score is written in a standard musical notation with a grand staff for the piano and a grand staff for the strings. The choir part is written in a grand staff with a soprano and bass line. The Solo B. part is written in a bass clef. The Tpt.1 and Tpt.2 parts are written in a treble clef with a key signature of two sharps. The Bar. part is written in a treble clef with a key signature of two sharps. The Tba. part is written in a bass clef with a key signature of two sharps. The Pno. part is written in a grand staff with a key signature of two sharps. The Vln. I and Vln. II parts are written in a treble clef with a key signature of two sharps. The Vla. part is written in a alto clef with a key signature of two sharps. The Vc. part is written in a bass clef with a key signature of two sharps. The score includes dynamic markings such as ff (fortissimo) and a crescendo hairpin.