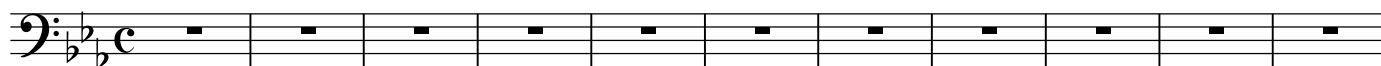


Радость радость непрестанно

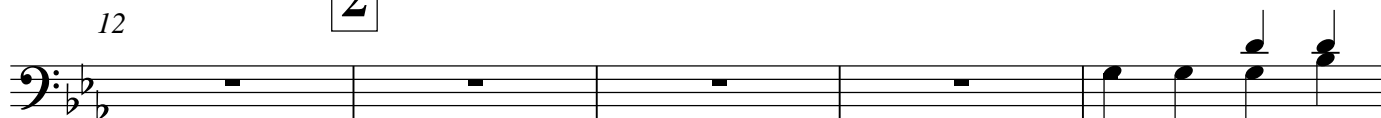
Arranger: Hans-Werner Groß

1

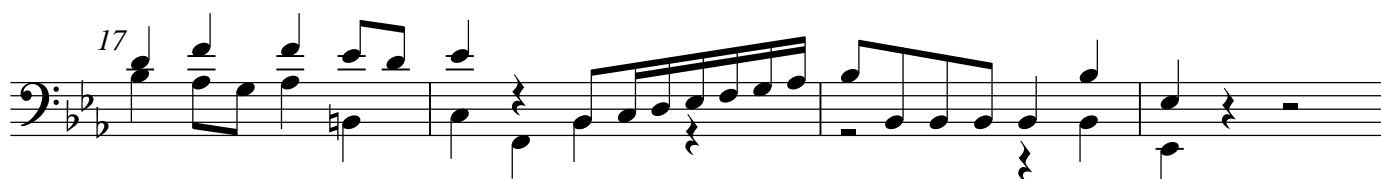


2

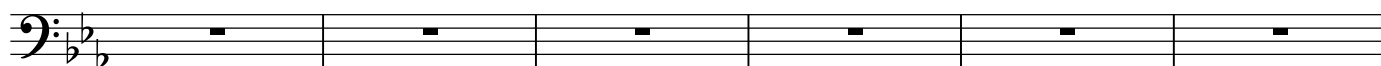
12



17



3

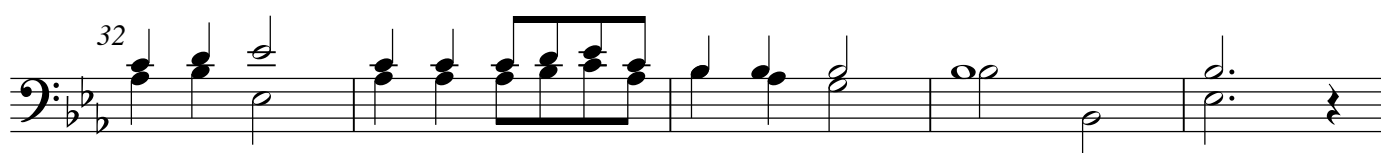


4

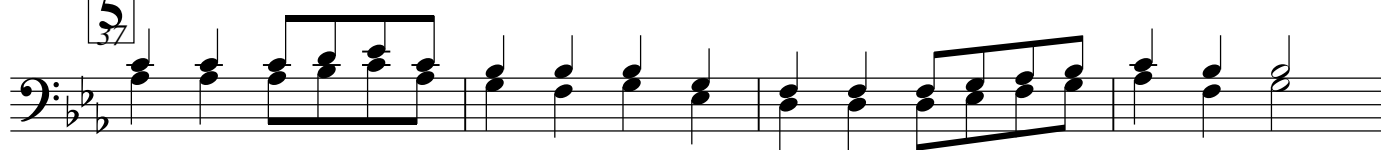
27



32



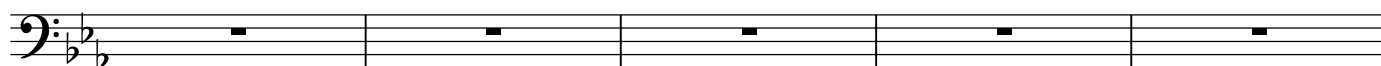
5



41



6



750


[illegible]

57 8


Measure 57: Bass clef, key signature of two flats (B-flat and E-flat). The melody consists of eighth and quarter notes: B-flat4, A4, G4, F#4, E4, D4, C4, B-flat3, A3, G3, F#3, E3, D3, C3, B-flat2, A2, G2, F#2, E2, D2, C2, B-flat1, A1, G1, F#1, E1, D1, C1, B-flat0, A0, G0, F#0, E0, D0, C0, B-flat-1, A-1, G-1, F#-1, E-1, D-1, C-1, B-flat-2, A-2, G-2, F#-2, E-2, D-2, C-2, B-flat-3, A-3, G-3, F#-3, E-3, D-3, C-3, B-flat-4, A-4, G-4, F#-4, E-4, D-4, C-4, B-flat-5, A-5, G-5, F#-5, E-5, D-5, C-5, B-flat-6, A-6, G-6, F#-6, E-6, D-6, C-6, B-flat-7, A-7, G-7, F#-7, E-7, D-7, C-7, B-flat-8, A-8, G-8, F#-8, E-8, D-8, C-8, B-flat-9, A-9, G-9, F#-9, E-9, D-9, C-9, B-flat-10, A-10, G-10, F#-10, E-10, D-10, C-10, B-flat-11, A-11, G-11, F#-11, E-11, D-11, C-11, B-flat-12, A-12, G-12, F#-12, E-12, D-12, C-12, B-flat-13, A-13, G-13, F#-13, E-13, D-13, C-13, B-flat-14, A-14, G-14, F#-14, E-14, D-14, C-14, B-flat-15, A-15, G-15, F#-15, E-15, D-15, C-15, B-flat-16, A-16, G-16, F#-16, E-16, D-16, C-16, B-flat-17, A-17, G-17, F#-17, E-17, D-17, C-17, B-flat-18, A-18, G-18, F#-18, E-18, D-18, C-18, B-flat-19, A-19, G-19, F#-19, E-19, D-19, C-19, B-flat-20, A-20, G-20, F#-20, E-20, D-20, C-20, B-flat-21, A-21, G-21, F#-21, E-21, D-21, C-21, B-flat-22, A-22, G-22, F#-22, E-22, D-22, C-22, B-flat-23, A-23, G-23, F#-23, E-23, D-23, C-23, B-flat-24, A-24, G-24, F#-24, E-24, D-24, C-24, B-flat-25, A-25, G-25, F#-25, E-25, D-25, C-25, B-flat-26, A-26, G-26, F#-26, E-26, D-26, C-26, B-flat-27, A-27, G-27, F#-27, E-27, D-27, C-27, B-flat-28, A-28, G-28, F#-28, E-28, D-28, C-28, B-flat-29, A-29, G-29, F#-29, E-29, D-29, C-29, B-flat-30, A-30, G-30, F#-30, E-30, D-30, C-30, B-flat-31, A-31, G-31, F#-31, E-31, D-31, C-31, B-flat-32, A-32, G-32, F#-32, E-32, D-32, C-32, B-flat-33, A-33, G-33, F#-33, E-33, D-33, C-33, B-flat-34, A-34, G-34, F#-34, E-34, D-34, C-34, B-flat-35, A-35, G-35, F#-35, E-35, D-35, C-35, B-flat-36, A-36, G-36, F#-36, E-36, D-36, C-36, B-flat-37, A-37, G-37, F#-37, E-37, D-37, C-37, B-flat-38, A-38, G-38, F#-38, E-38, D-38, C-38, B-flat-39, A-39, G-39, F#-39, E-39, D-39, C-39, B-flat-40, A-40, G-40, F#-40, E-40, D-40, C-40, B-flat-41, A-41, G-41, F#-41, E-41, D-41, C-41, B-flat-42, A-42, G-42, F#-42, E-42, D-42, C-42, B-flat-43, A-43, G-43, F#-43, E-43, D-43, C-43, B-flat-44, A-44, G-44, F#-44, E-44, D-44, C-44, B-flat-45, A-45, G-45, F#-45, E-45, D-45, C-45, B-flat-46, A-46, G-46, F#-46, E-46, D-46, C-46, B-flat-47, A-47, G-47, F#-47, E-47, D-47, C-47, B-flat-48, A-48, G-48, F#-48, E-48, D-48, C-48, B-flat-49, A-49, G-49, F#-49, E-49, D-49, C-49, B-flat-50, A-50, G-50, F#-50, E-50, D-50, C-50, B-flat-51, A-51, G-51, F#-51, E-51, D-51, C-51, B-flat-52, A-52, G-52, F#-52, E-52, D-52, C-52, B-flat-53, A-53, G-53, F#-53, E-53, D-53, C-53, B-flat-54, A-54, G-54, F#-54, E-54, D-54, C-54, B-flat-55, A-55, G-55, F#-55, E-55, D-55, C-55, B-flat-56, A-56, G-56, F#-56, E-56, D-56, C-56, B-flat-57, A-57, G-57, F#-57, E-57, D-57, C-57, B-flat-58, A-58, G-58, F#-58, E-58, D-58, C-58, B-flat-59, A-59, G-59, F#-59, E-59, D-59, C-59, B-flat-60, A-60, G-60, F#-60, E-60, D-60, C-60, B-flat-61, A-61, G-61, F#-61, E-61, D-61, C-61, B-flat-62, A-62, G-62, F#-62, E-62, D-62, C-62, B-flat-63, A-63, G-63, F#-63, E-63, D-63, C-63, B-flat-64, A-64, G-64, F#-64, E-64, D-64, C-64, B-flat-65, A-65, G-65, F#-65, E-65, D-65, C-65, B-flat-66, A-66, G-66, F#-66, E-66, D-66, C-66, B-flat-67, A-67, G-67, F#-67, E-67, D-67, C-67, B-flat-68, A-68, G-68, F#-68, E-68, D-68, C-68, B-flat-69, A-69, G-69, F#-69, E-69, D-69, C-69, B-flat-70, A-70, G-70, F#-70, E-70, D-70, C-70, B-flat-71, A-71, G-71, F#-71, E-71, D-71, C-71, B-flat-72, A-72, G-72, F#-72, E-72, D-72, C-72, B-flat-73, A-73, G-73, F#-73, E-73, D-73, C-73, B-flat-74, A-74, G-74, F#-74, E-74, D-74, C-74, B-flat-75, A-75, G-75, F#-75, E-75, D-75, C-75, B-flat-76, A-76, G-76, F#-76, E-76, D-76, C-76, B-flat-77, A-77, G-77, F#-77, E-77, D-77, C-77, B-flat-78, A-78, G-78, F#-78, E-78, D-78, C-78, B-flat-79, A-79, G-79, F#-79, E-79, D-79, C-79, B-flat-80, A-80, G-80, F#-80, E-80, D-80, C-80, B-flat-81, A-81, G-81, F#-81, E-81, D-81, C-81, B-flat-82, A-82, G-82, F#-82, E-82, D-82, C-82, B-flat-83, A-83, G-83, F#-83, E-83, D-83, C-83, B-flat-84, A-84, G-84, F#-84, E-84, D-84, C-84, B-flat-85, A-85, G-85, F#-85, E-85, D-85, C-85, B-flat-86, A-86, G-86, F#-86, E-86, D-86, C-86, B-flat-87, A-87, G-87, F#-87, E-87, D-87, C-87, B-flat-88, A-88, G-88, F#-88, E-88, D-88, C-88, B-flat-89, A-89, G-89, F#-89, E-89, D-89, C-89, B-flat-90, A-90, G-90, F#-90, E-90, D-90, C-90, B-flat-91, A-91, G-91, F#-91, E-91, D-91, C-91, B-flat-92, A-92, G-92, F#-92, E-92, D-92, C-92, B-flat-93, A-93, G-93, F#-93, E-93, D-93, C-93, B-flat-94, A-94, G-94, F#-94, E-94, D-94, C-94, B-flat-95, A-95, G-95, F#-95, E-95, D-95, C-95, B-flat-96, A-96, G-96, F#-96, E-96, D-96, C-96, B-flat-97, A-97, G-97, F#-97, E-97, D-97, C-97, B-flat-98, A-98, G-98, F#-98, E-98, D-98, C-98, B-flat-99, A-99, G-99, F#-99, E-99, D-99, C-99, B-flat-100, A-100, G-100, F#-100, E-100, D-100, C-100, B-flat-101, A-101, G-101, F#-101, E-101, D-101, C-101, B-flat-102, A-102, G-102, F#-102, E-102, D-102, C-102, B-flat-103, A-103, G-103, F#-103, E-103, D-103, C-103, B-flat-104, A-104, G-104, F#-104, E-104, D-104, C-104, B-flat-105, A-105, G-105, F#-105, E-105, D-105, C-105, B-flat-106, A-106, G-106, F#-1

63

9



69




10
76

Musical notation for exercise 10, measure 76. The staff is in bass clef with a key signature of two flats (Bb and Eb). The melody consists of eighth and sixteenth notes, followed by a long rest.

81

11



86 12



Musical notation for exercise 86, measure 12. The staff is in bass clef with a key signature of two flats (Bb and Eb). The measure contains a whole note chord of Bb2, Eb3, and Gb3, followed by a half note chord of Bb2 and Eb3, and then a half note chord of Bb2 and Gb3. The measure ends with a whole note chord of Bb2 and Eb3.

Full Score

13
97

14
95

15

100

16
103

The image displays a musical score for a bass clef instrument in the key of B-flat major. The score is organized into four systems. The first system contains measures 13 and 14, with rehearsal marks 97 and 95 respectively. The second system contains measures 15 and 16, with rehearsal marks 100 and 103 respectively. The notation includes various rhythmic values and articulations, such as eighth notes, quarter notes, and beamed sixteenth notes, often appearing in groups. The score concludes with a double bar line at the end of measure 16.