

Фортепиано

# В ХЛЕБУ РОДИЛСЯ

Самуил Перебиковский  
Arranžeerija Ernest Elnathan

**Adagio** Вступление

musical score for the introduction of the piece. It is in 4/4 time and B-flat major. The tempo is Adagio. The score consists of two staves: a treble staff and a bass staff. The treble staff begins with a whole rest, followed by a series of chords. The bass staff begins with a whole rest, followed by a series of chords. The dynamic marking *mp* is present.

4

**1** 3 куплета

musical score for the first 3-phrase section. It is in 4/4 time and B-flat major. The score consists of two staves: a treble staff and a bass staff. The treble staff begins with a series of chords, followed by a repeat sign. The bass staff begins with a series of chords, followed by a repeat sign. The dynamic marking *mp* is present.

9

musical score for the second 3-phrase section. It is in 4/4 time and B-flat major. The score consists of two staves: a treble staff and a bass staff. The treble staff begins with a series of chords, followed by a repeat sign. The bass staff begins with a series of chords, followed by a repeat sign. The dynamic marking *mp* is present.

12

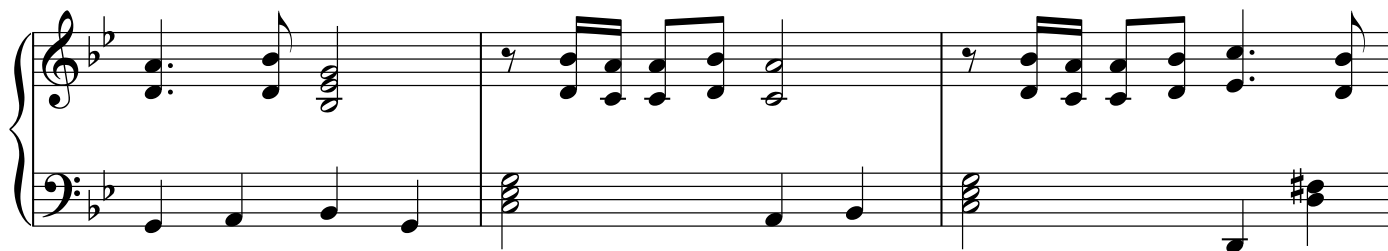
**2** Припев

musical score for the chorus. It is in 4/4 time and B-flat major. The score consists of two staves: a treble staff and a bass staff. The treble staff begins with a series of chords, followed by a repeat sign. The bass staff begins with a series of chords, followed by a repeat sign. The dynamic marking *mp* is present.

15

musical score for the final 3-phrase section. It is in 4/4 time and B-flat major. The score consists of two staves: a treble staff and a bass staff. The treble staff begins with a series of chords, followed by a repeat sign. The bass staff begins with a series of chords, followed by a repeat sign. The dynamic marking *mp* is present.

18



21

